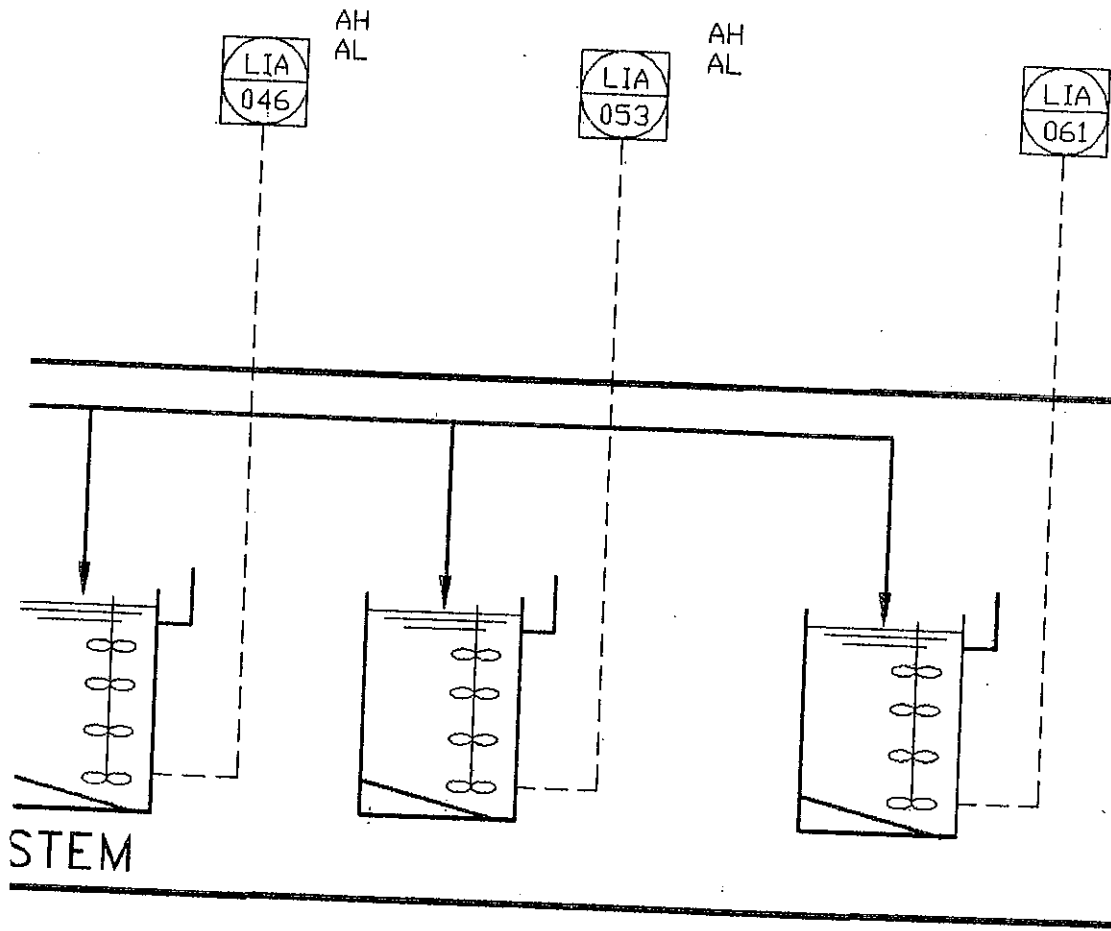


PULPING S



LIA
046

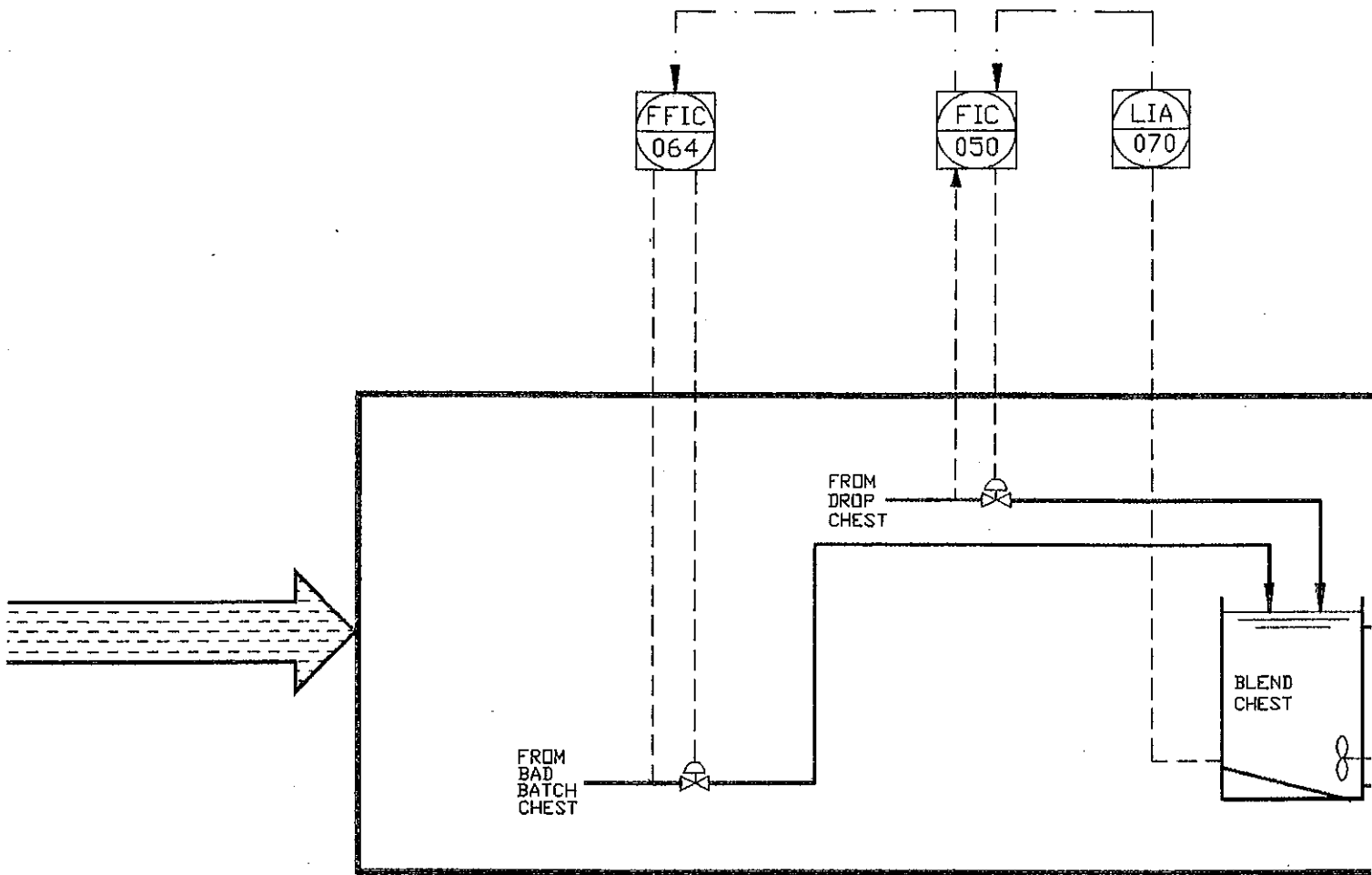
AH
AL

LIA
053

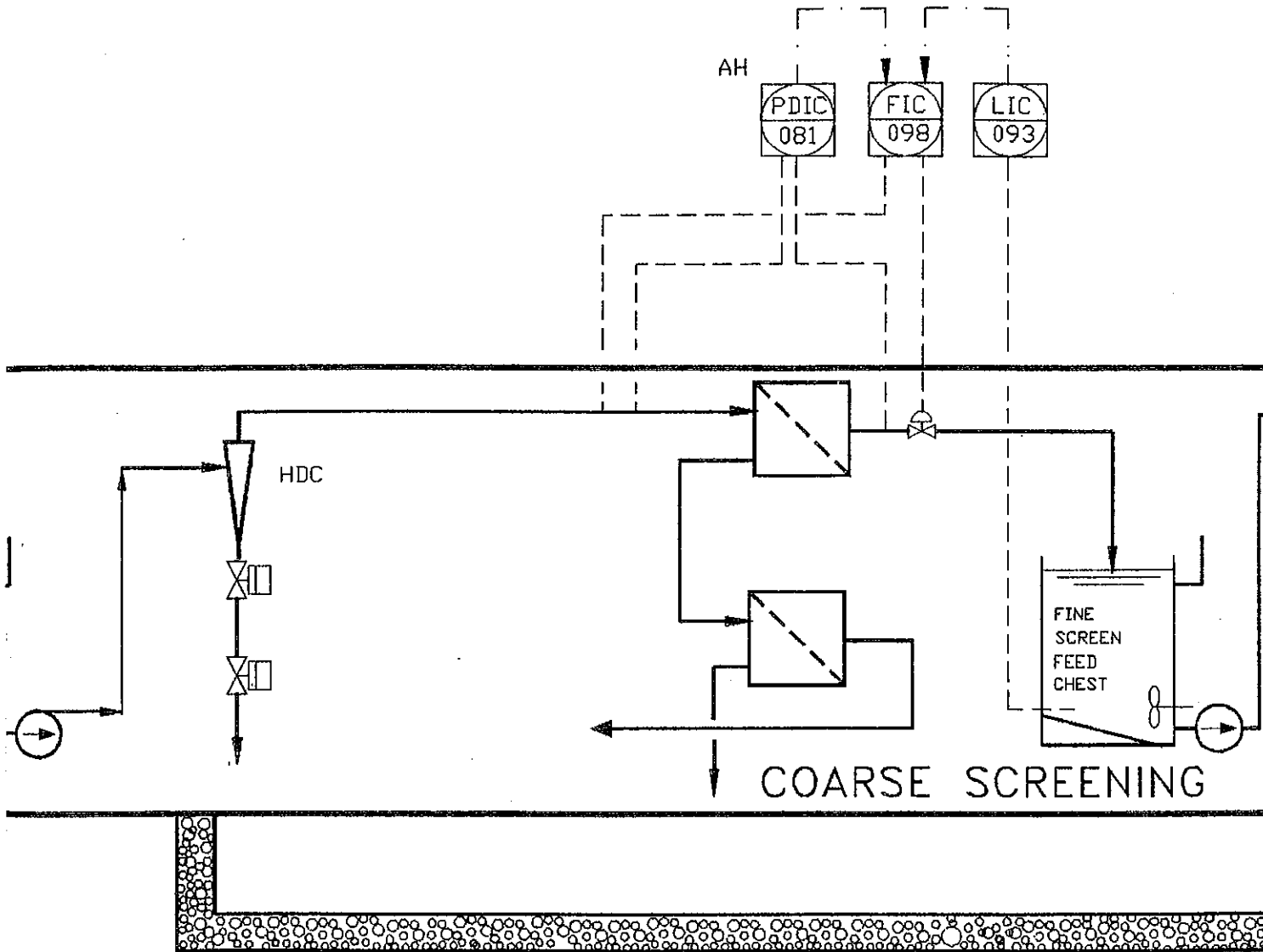
AH
AL

LIA
061

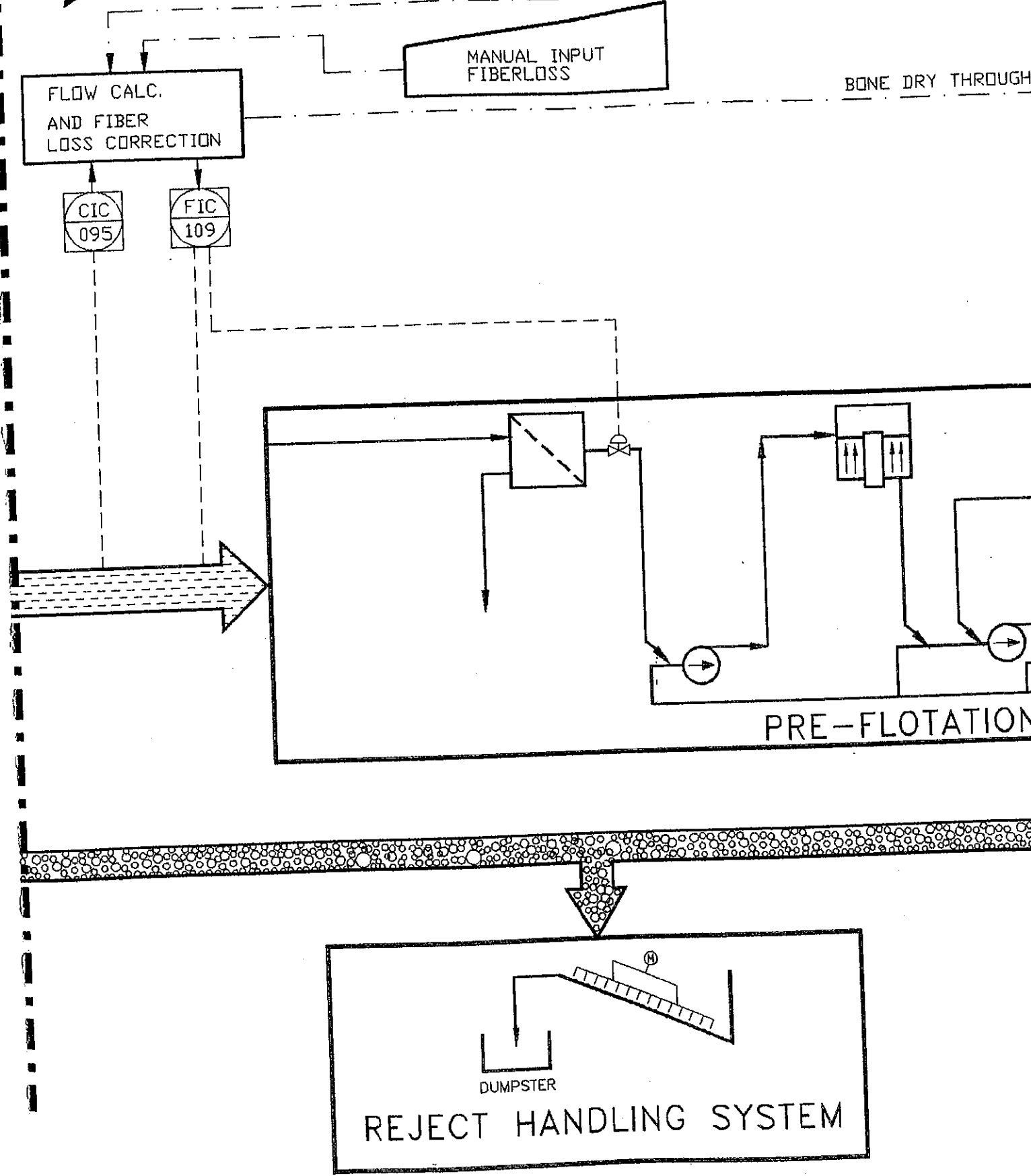
STEM



FEED BACK CONTROL ←



FEED FORWARD CONTROL



MANUAL INPUT
BASIC SPEED

PUT

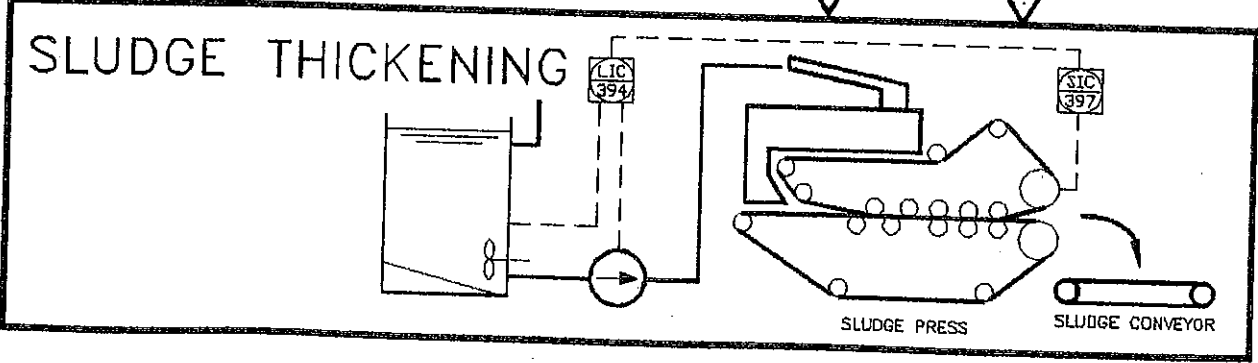
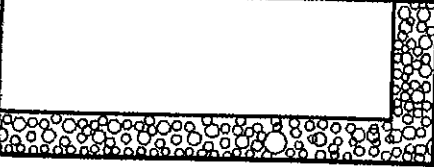
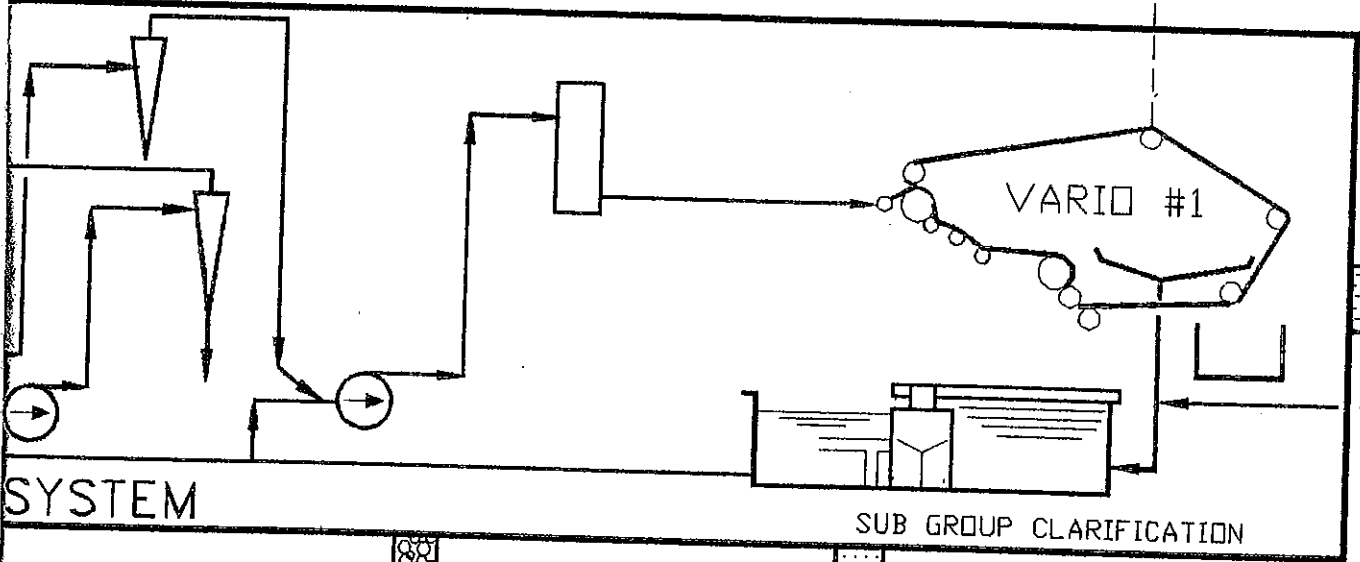
RATIO

F
AN.
C

VARID SPLIT
SPEED

SIC
185

CIC
198



DW CALC.
FIBERLOSS
RECTION

MANUAL INPUT
FIBER LOSS

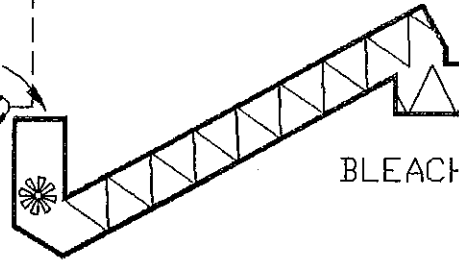
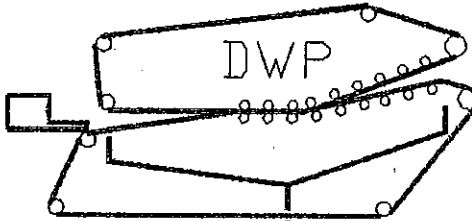
DELAY
APPROX. 4 MIN.

RATIO
FOR
BLEACH

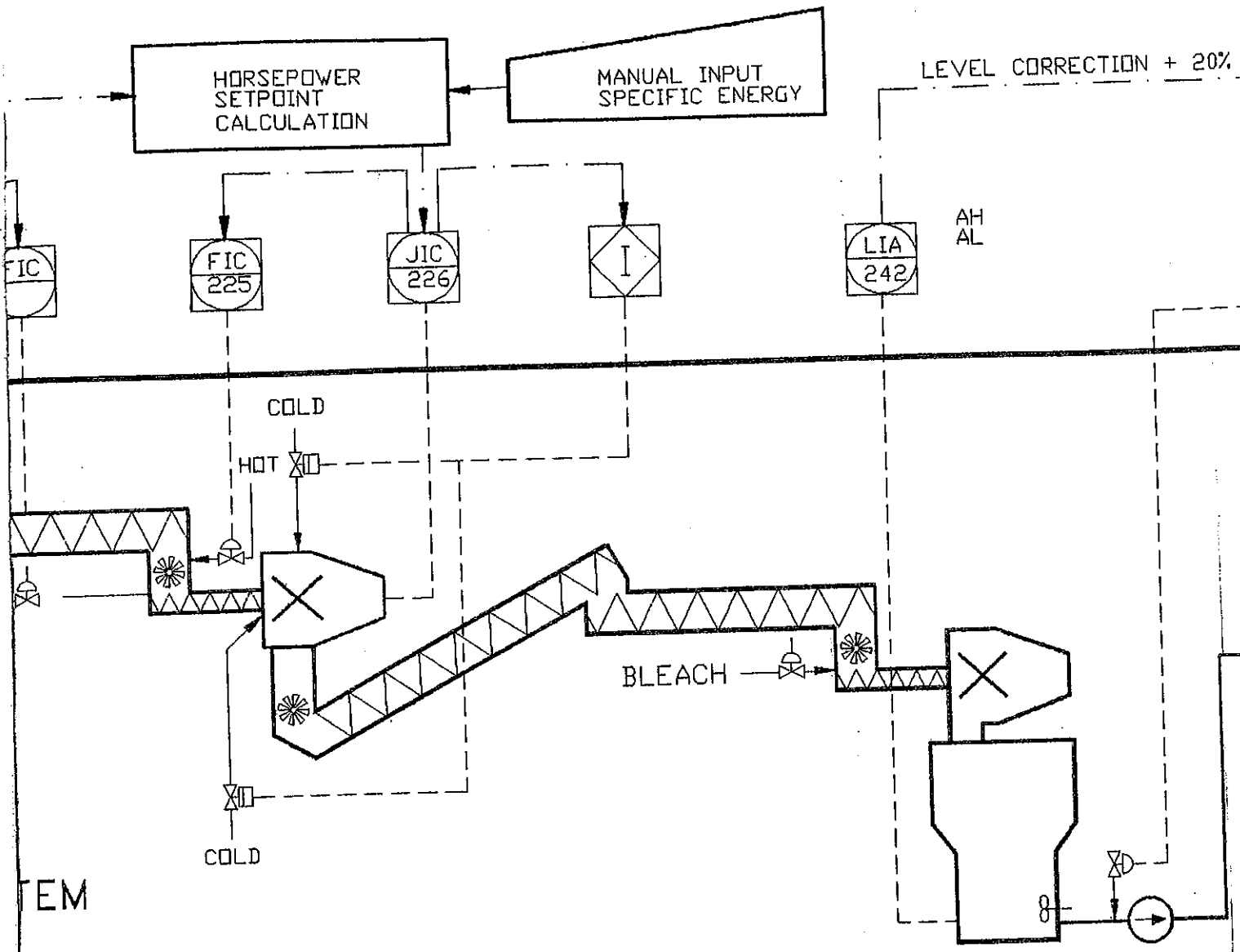
FIC
199

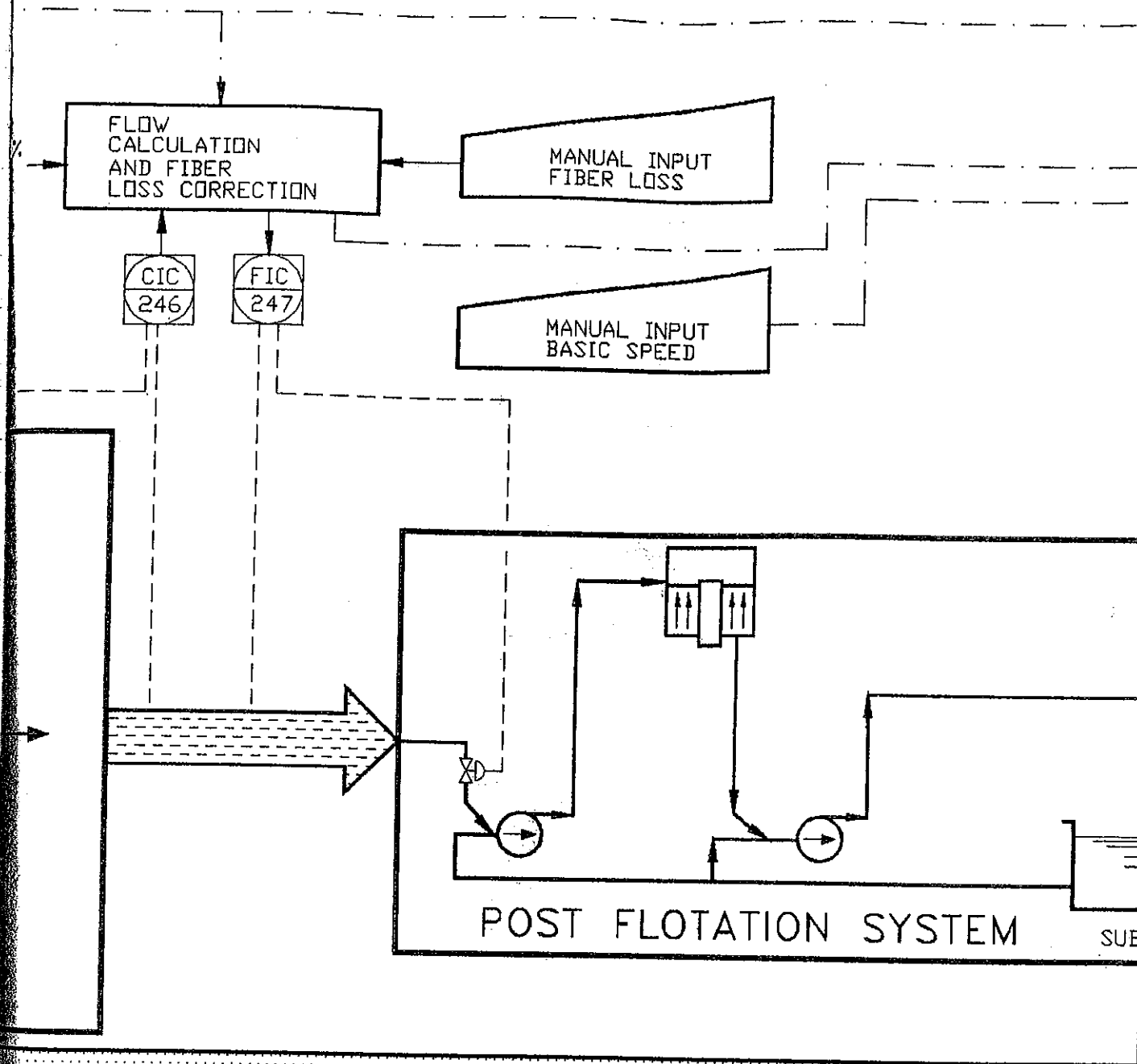
SIC
204

DOUBLE WIRE
PRESS



DISPERGER SYSTEM & BLEACH S'





FLOW
CALCULATION
AND FIBER
LOSS CORRECTION

MANUAL INPUT
FIBER LOSS

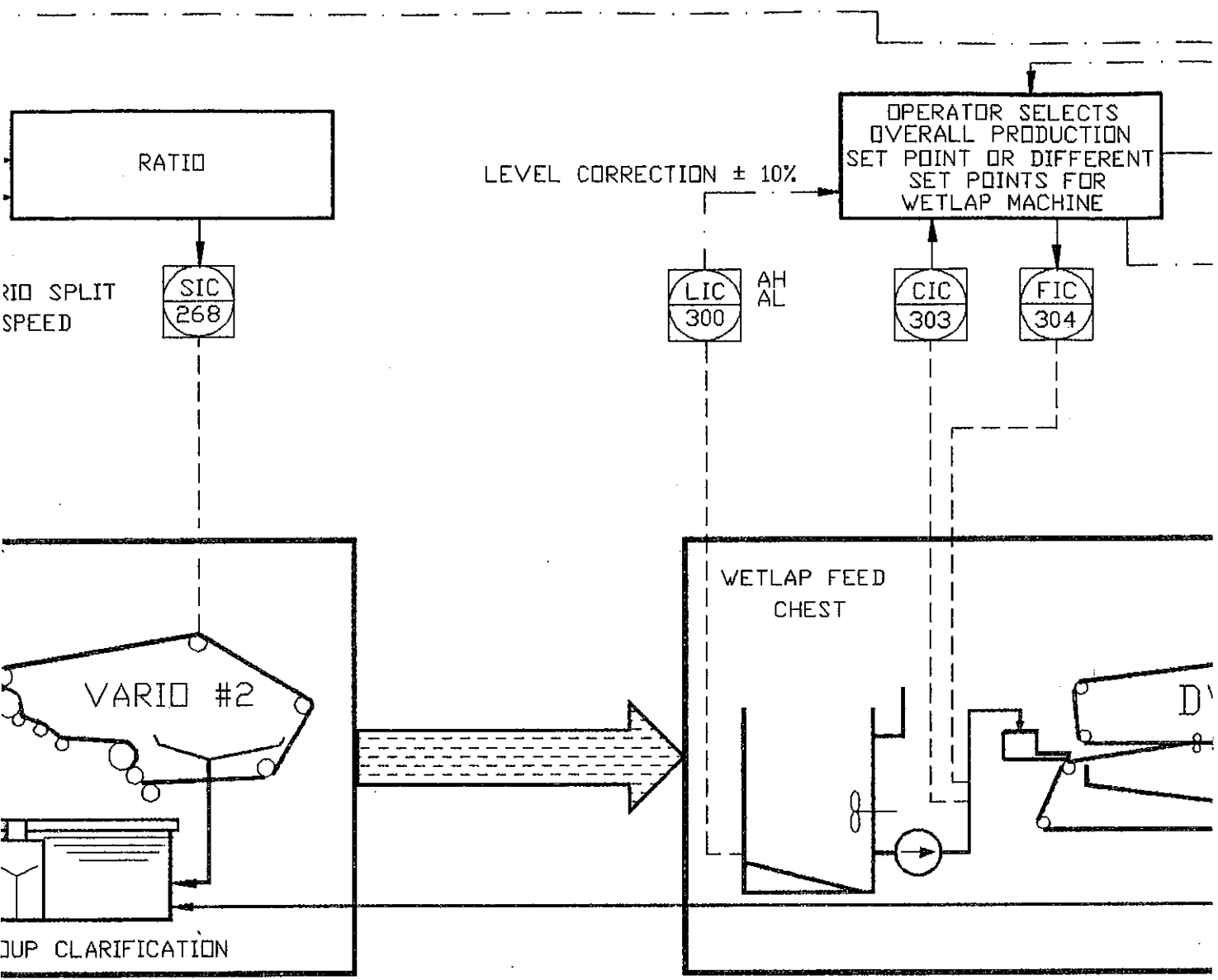
CIC
246

FIC
247

MANUAL INPUT
BASIC SPEED

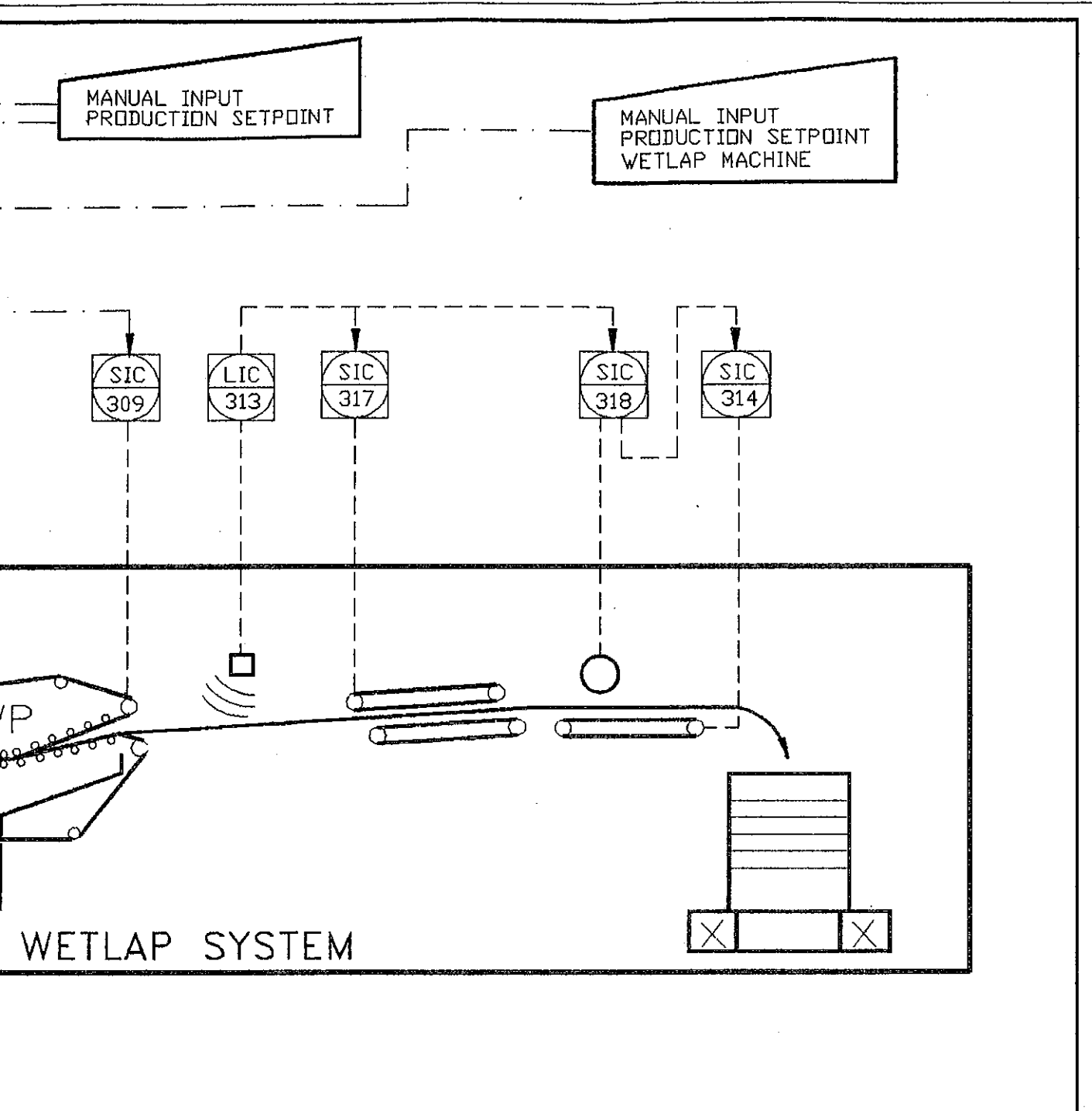
POST FLOTATION SYSTEM

SUB





This Design is the Property of
 Bird Escher Wyss. Receiver
 agrees not to use, copy or
 FEB 17 1993
 disclose except as required for
 the purpose for which it was
 furnished.

SYMBOLS USED: ISO 6011, ISO 1028
 ANSI X3.5, FRF LE



--- CAD DRAWING ---

CUSTOMER	BURROWS PAPER CORPORATION LITTLE FALLS, NEW YORK		
SYSTEM	PRODUCTION CONTROL SCHEMATIC DEINKING SYSTEM		
 BURROWS PAPER CORPORATION LITTLE FALLS, NEW YORK		 Bird Escher Wyss Inc. MANSFIELD, MA U.S.A.	
REVISION	0	2/16/93	KC/STR
DESIGNED BY: KC	DATE: 10/29/92		
DRAWN BY: STR	DATE: 10/30/92		
CHECKED BY: KC	DATE: 11/5/92		
SALES NO. 16869			
			CLIENT NO. 500-015
			YPI8-918-00020

END