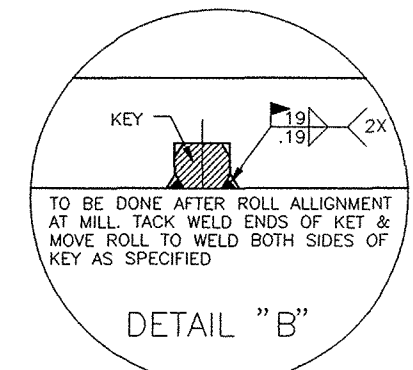
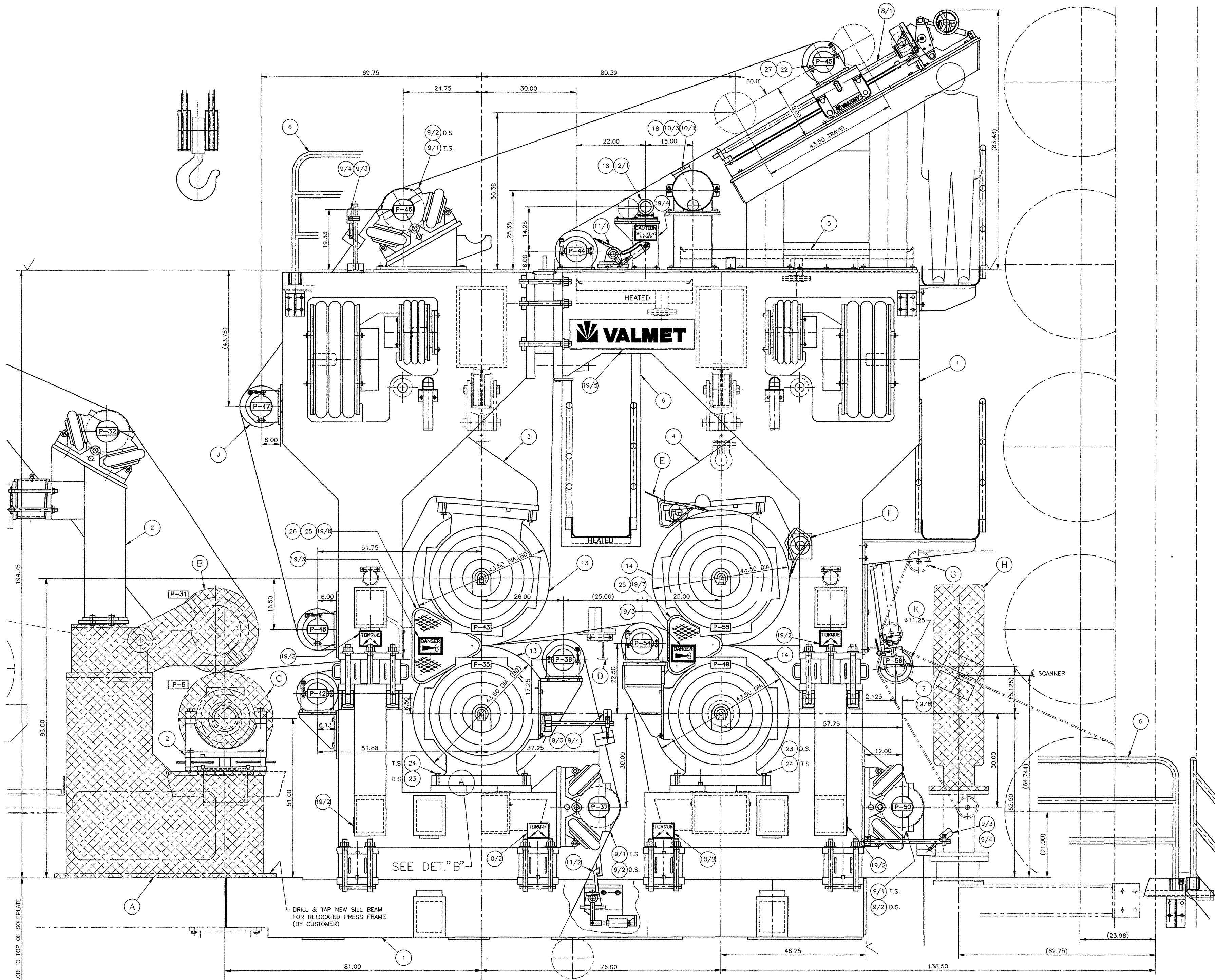


- NOTES:
- 1 - PAPER GRADE = COATED BOXBOARD
 - 2 - MACHINE WIDTH = 164.00 MOULD
 - 3 - DESIGN SPEED = 800 FPM

ITEM	QTY	DESCRIPTION	UNLESS OTHERWISE SPECIFIED	MASS (LB.)	SHEET 1 OF 5
1	1	DRUM	STEEL		DEBURR AND/OR BREAK ALL SHARP CORNERS OR EDGES - 0.3 RAD. MAX
2	1	ROLLER	STEEL		
3	1	ROLLER	STEEL		
4	1	ROLLER	STEEL		
5	1	ROLLER	STEEL		
6	1	ROLLER	STEEL		
7	1	ROLLER	STEEL		
8	1	ROLLER	STEEL		
9	1	ROLLER	STEEL		
10	1	ROLLER	STEEL		
11	1	ROLLER	STEEL		
12	1	ROLLER	STEEL		
13	1	ROLLER	STEEL		
14	1	ROLLER	STEEL		
15	1	ROLLER	STEEL		
16	1	ROLLER	STEEL		
17	1	ROLLER	STEEL		
18	1	ROLLER	STEEL		
19	1	ROLLER	STEEL		
20	1	ROLLER	STEEL		
21	1	ROLLER	STEEL		
22	1	ROLLER	STEEL		
23	1	ROLLER	STEEL		
24	1	ROLLER	STEEL		
25	1	ROLLER	STEEL		
26	1	ROLLER	STEEL		
27	1	ROLLER	STEEL		
28	1	ROLLER	STEEL		
29	1	ROLLER	STEEL		
30	1	ROLLER	STEEL		
31	1	ROLLER	STEEL		
32	1	ROLLER	STEEL		
33	1	ROLLER	STEEL		
34	1	ROLLER	STEEL		
35	1	ROLLER	STEEL		
36	1	ROLLER	STEEL		
37	1	ROLLER	STEEL		
38	1	ROLLER	STEEL		
39	1	ROLLER	STEEL		
40	1	ROLLER	STEEL		
41	1	ROLLER	STEEL		
42	1	ROLLER	STEEL		
43	1	ROLLER	STEEL		
44	1	ROLLER	STEEL		
45	1	ROLLER	STEEL		
46	1	ROLLER	STEEL		
47	1	ROLLER	STEEL		
48	1	ROLLER	STEEL		
49	1	ROLLER	STEEL		
50	1	ROLLER	STEEL		
51	1	ROLLER	STEEL		
52	1	ROLLER	STEEL		
53	1	ROLLER	STEEL		
54	1	ROLLER	STEEL		
55	1	ROLLER	STEEL		
56	1	ROLLER	STEEL		
57	1	ROLLER	STEEL		
58	1	ROLLER	STEEL		
59	1	ROLLER	STEEL		
60	1	ROLLER	STEEL		
61	1	ROLLER	STEEL		
62	1	ROLLER	STEEL		
63	1	ROLLER	STEEL		
64	1	ROLLER	STEEL		
65	1	ROLLER	STEEL		
66	1	ROLLER	STEEL		
67	1	ROLLER	STEEL		
68	1	ROLLER	STEEL		
69	1	ROLLER	STEEL		
70	1	ROLLER	STEEL		
71	1	ROLLER	STEEL		
72	1	ROLLER	STEEL		
73	1	ROLLER	STEEL		
74	1	ROLLER	STEEL		
75	1	ROLLER	STEEL		
76	1	ROLLER	STEEL		
77	1	ROLLER	STEEL		
78	1	ROLLER	STEEL		
79	1	ROLLER	STEEL		
80	1	ROLLER	STEEL		
81	1	ROLLER	STEEL		
82	1	ROLLER	STEEL		
83	1	ROLLER	STEEL		
84	1	ROLLER	STEEL		
85	1	ROLLER	STEEL		
86	1	ROLLER	STEEL		
87	1	ROLLER	STEEL		
88	1	ROLLER	STEEL		
89	1	ROLLER	STEEL		
90	1	ROLLER	STEEL		
91	1	ROLLER	STEEL		
92	1	ROLLER	STEEL		
93	1	ROLLER	STEEL		
94	1	ROLLER	STEEL		
95	1	ROLLER	STEEL		
96	1	ROLLER	STEEL		
97	1	ROLLER	STEEL		
98	1	ROLLER	STEEL		
99	1	ROLLER	STEEL		
100	1	ROLLER	STEEL		

30 SEP 94 D.Q. PAUL D.Q. PAUL SEE SHEET #4		A		PRESS ARRANGEMENT	
30 SEP 94 D.Q. PAUL D.Q. PAUL STAND ADDED UNDER FELT ROLL #34		A		OVERALL PRESS REBUILD	
DATE	NAME	APP'D	DESIGN	OWNER	REV
				SCALE	1/20
				PROJECT	9U300-0360 A



FELT DESCRIPTION	MINIMUM	MAXIMUM
PRIMARY TOP FELT	82 FT. - 8 IN.	89 FT. - 11 IN.
1ST MAIN TOP FELT	30 FT. - 3 IN.	37 FT. - 5 IN.
2ND MAIN TOP FELT	46 FT. - 10 IN.	54 FT. - 1 IN.
2ND MAIN BOTTOM FELT	42 FT. - 10 IN.	51 FT. - 2 IN.
3RD MAIN BOTTOM FELT	33 FT. - 8 IN.	39 FT. - 9 IN.

FASTENER SIZE	BOLT GRADE / MATERIAL		
	GRADE 5	GRADE 8	316 SST
500-13 UNC	55	80	45
625-11 UNC	110	160	100
750-10 UNC	200	280	130
875-9 UNC	320	450	200
1000-8 UNC	480	680	300
1250-7 UNC	840	1360	550
1500-6 UNC	1460	2370	930

RELOCATED EXISTING EQUIPMENT (BY CUSTOMER)

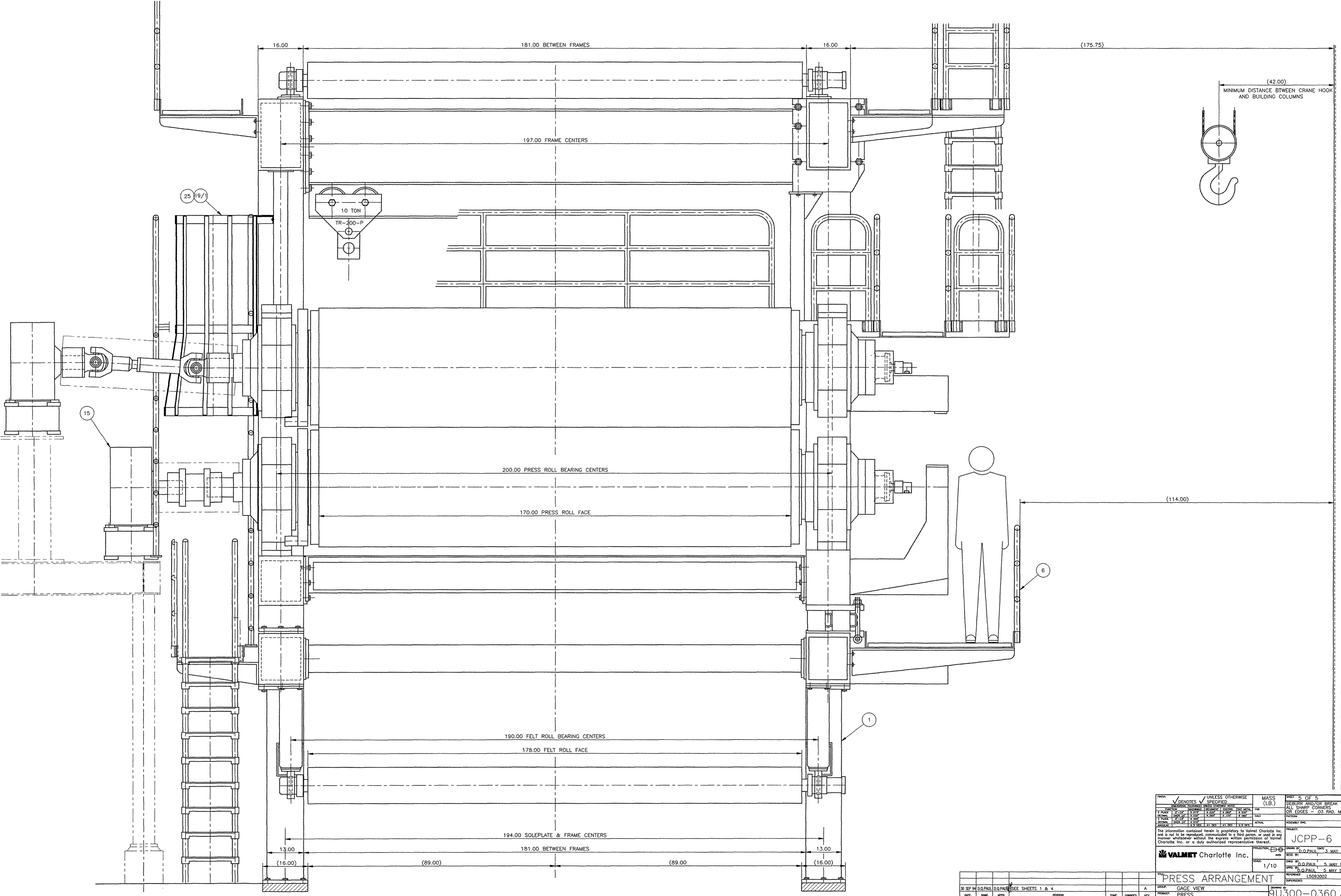
- (A) 1ST MAIN PRESS (7.00" TOWARD WET END)
 - (B) 1ST MAIN PRESS TOP ROLL (REF 6-5002)
 - (C) 1ST MAIN PRESS BOTTOM ROLL (REF C-5445)
 - (D) T.S. ROLL REMOVAL EXTENSION REQUIRED (BY CUSTOMER)
 - (E) EXISTING EDGE TRIM ASSEMBLY TO BE MODIFIED AND MOUNTED (BY CUSTOMER)
 - (F) EXISTING DOCTOR AND OSCILLATOR TO BE MODIFIED AND MOUNTED (BY CUSTOMER)
 - (G) EXISTING DOCTOR AND OSCILLATOR TO BE MODIFIED AND MOUNTED (BY CUSTOMER)
 - (H) TAIL THREADING ROPE SYSTEM MODIFICATIONS (BY CUSTOMER)
 - (I) SCANNER
 - (J) FELT ROLLS (13.25 DIA. X 178.00 FACE)
 - (K) PAPER ROLL (11.25 DIA. X 178.00 FACE)
- T.S. BEARING HOUSING MODIFIED BY VALMET
D.S. BEARING HOUSING SPHERICAL DIAMETER MODIFIED TO 6.870/6.875 DIA (BY CUSTOMER)
- (16) FELT CHANGE PROCEDURE DWG. 5U390-0678
 - (17) ROLL CHANGE PROCEDURE DWG. 5U390-0679
 - (28) 2ND/3RD MAIN PRESS LOADING CHART DWG. 3U390-0719

NO.	DATE	BY	APP.	REVISION	ZONE	CHANGES	KEY

VALMET Charlotte Inc. PROJECT: JCPP-6
DATE: 2 MAY 94
SCALE: 1/10
DRAWN BY: D. PAUL
CHECKED BY: D. PAUL
APPROVED BY: D. PAUL

TITLE: PRESS ARRANGEMENT
FRONT ELEVATION (UPPER)
PRESS

30 SEP 94 0 PAUL 0 PAUL SEE SHEETS 1 & 4
DATE NAME APP



FINISH	UNLESS OTHERWISE SPECIFIED	MASS (LB.)	SHEET 5 OF 5
FUNCTION	DEBURR AND/OR BREAK ALL SHARP CORNERS OR EDGES - .03 RAD. MAX.		
1 FRAME 1/2" DIA	1.500	1.500	
2 FRAME 1/2" DIA	1.500	1.500	
3 FRAME 1/2" DIA	1.500	1.500	
4 FRAME 1/2" DIA	1.500	1.500	
5 FRAME 1/2" DIA	1.500	1.500	
6 FRAME 1/2" DIA	1.500	1.500	
7 FRAME 1/2" DIA	1.500	1.500	
8 FRAME 1/2" DIA	1.500	1.500	
9 FRAME 1/2" DIA	1.500	1.500	
10 FRAME 1/2" DIA	1.500	1.500	
11 FRAME 1/2" DIA	1.500	1.500	
12 FRAME 1/2" DIA	1.500	1.500	
13 FRAME 1/2" DIA	1.500	1.500	
14 FRAME 1/2" DIA	1.500	1.500	
15 FRAME 1/2" DIA	1.500	1.500	
16 FRAME 1/2" DIA	1.500	1.500	
17 FRAME 1/2" DIA	1.500	1.500	
18 FRAME 1/2" DIA	1.500	1.500	
19 FRAME 1/2" DIA	1.500	1.500	
20 FRAME 1/2" DIA	1.500	1.500	
21 FRAME 1/2" DIA	1.500	1.500	
22 FRAME 1/2" DIA	1.500	1.500	
23 FRAME 1/2" DIA	1.500	1.500	
24 FRAME 1/2" DIA	1.500	1.500	
25 FRAME 1/2" DIA	1.500	1.500	
26 FRAME 1/2" DIA	1.500	1.500	
27 FRAME 1/2" DIA	1.500	1.500	
28 FRAME 1/2" DIA	1.500	1.500	
29 FRAME 1/2" DIA	1.500	1.500	
30 FRAME 1/2" DIA	1.500	1.500	
31 FRAME 1/2" DIA	1.500	1.500	
32 FRAME 1/2" DIA	1.500	1.500	
33 FRAME 1/2" DIA	1.500	1.500	
34 FRAME 1/2" DIA	1.500	1.500	
35 FRAME 1/2" DIA	1.500	1.500	
36 FRAME 1/2" DIA	1.500	1.500	
37 FRAME 1/2" DIA	1.500	1.500	
38 FRAME 1/2" DIA	1.500	1.500	
39 FRAME 1/2" DIA	1.500	1.500	
40 FRAME 1/2" DIA	1.500	1.500	
41 FRAME 1/2" DIA	1.500	1.500	
42 FRAME 1/2" DIA	1.500	1.500	
43 FRAME 1/2" DIA	1.500	1.500	
44 FRAME 1/2" DIA	1.500	1.500	
45 FRAME 1/2" DIA	1.500	1.500	
46 FRAME 1/2" DIA	1.500	1.500	
47 FRAME 1/2" DIA	1.500	1.500	
48 FRAME 1/2" DIA	1.500	1.500	
49 FRAME 1/2" DIA	1.500	1.500	
50 FRAME 1/2" DIA	1.500	1.500	
51 FRAME 1/2" DIA	1.500	1.500	
52 FRAME 1/2" DIA	1.500	1.500	
53 FRAME 1/2" DIA	1.500	1.500	
54 FRAME 1/2" DIA	1.500	1.500	
55 FRAME 1/2" DIA	1.500	1.500	
56 FRAME 1/2" DIA	1.500	1.500	
57 FRAME 1/2" DIA	1.500	1.500	
58 FRAME 1/2" DIA	1.500	1.500	
59 FRAME 1/2" DIA	1.500	1.500	
60 FRAME 1/2" DIA	1.500	1.500	
61 FRAME 1/2" DIA	1.500	1.500	
62 FRAME 1/2" DIA	1.500	1.500	
63 FRAME 1/2" DIA	1.500	1.500	
64 FRAME 1/2" DIA	1.500	1.500	
65 FRAME 1/2" DIA	1.500	1.500	
66 FRAME 1/2" DIA	1.500	1.500	
67 FRAME 1/2" DIA	1.500	1.500	
68 FRAME 1/2" DIA	1.500	1.500	
69 FRAME 1/2" DIA	1.500	1.500	
70 FRAME 1/2" DIA	1.500	1.500	
71 FRAME 1/2" DIA	1.500	1.500	
72 FRAME 1/2" DIA	1.500	1.500	
73 FRAME 1/2" DIA	1.500	1.500	
74 FRAME 1/2" DIA	1.500	1.500	
75 FRAME 1/2" DIA	1.500	1.500	
76 FRAME 1/2" DIA	1.500	1.500	
77 FRAME 1/2" DIA	1.500	1.500	
78 FRAME 1/2" DIA	1.500	1.500	
79 FRAME 1/2" DIA	1.500	1.500	
80 FRAME 1/2" DIA	1.500	1.500	
81 FRAME 1/2" DIA	1.500	1.500	
82 FRAME 1/2" DIA	1.500	1.500	
83 FRAME 1/2" DIA	1.500	1.500	
84 FRAME 1/2" DIA	1.500	1.500	
85 FRAME 1/2" DIA	1.500	1.500	
86 FRAME 1/2" DIA	1.500	1.500	
87 FRAME 1/2" DIA	1.500	1.500	
88 FRAME 1/2" DIA	1.500	1.500	
89 FRAME 1/2" DIA	1.500	1.500	
90 FRAME 1/2" DIA	1.500	1.500	
91 FRAME 1/2" DIA	1.500	1.500	
92 FRAME 1/2" DIA	1.500	1.500	
93 FRAME 1/2" DIA	1.500	1.500	
94 FRAME 1/2" DIA	1.500	1.500	
95 FRAME 1/2" DIA	1.500	1.500	
96 FRAME 1/2" DIA	1.500	1.500	
97 FRAME 1/2" DIA	1.500	1.500	
98 FRAME 1/2" DIA	1.500	1.500	
99 FRAME 1/2" DIA	1.500	1.500	
100 FRAME 1/2" DIA	1.500	1.500	