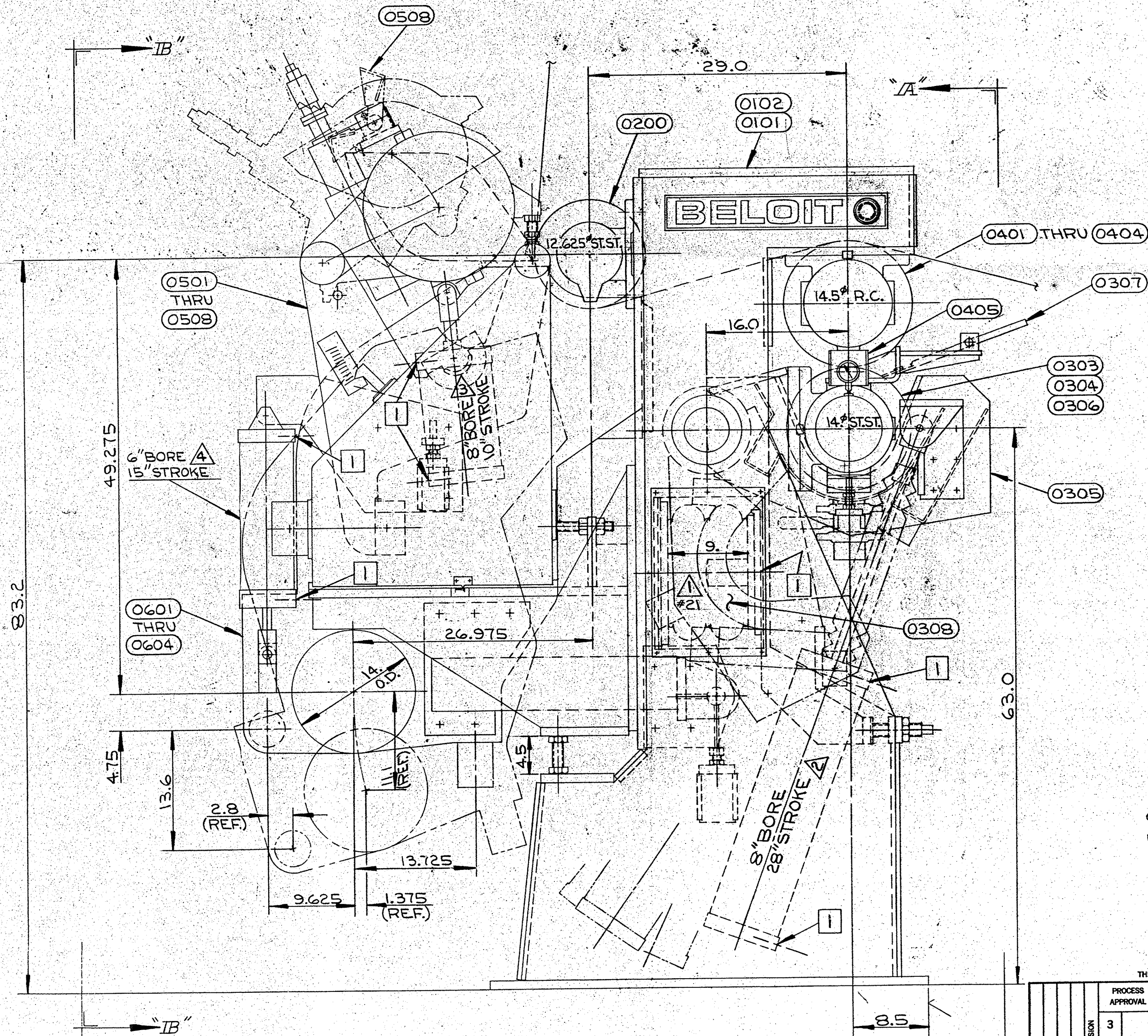


NOTES:

- 1. 3/4 P.T. - AIR INLET



AIR PRESSURE REQUIREMENTS

- 1. 52 P.S.I. REQ'D. TO HOLD ROLL AND PAN IN OPER. POSN. @ 25 P.S.I. AGAINST STOPS.
- 2. 26 P.S.I. REQ'D. TO HOLD PAN IN OPER. POSN. AGAINST SEALS AND STOPS. SET @ 40 P.S.I. USE 30 P.S.I. TO DUMP PAN.
- 3. 55 P.S.I. REQ'D. TO RAISE HEAD. SET @ 25 P.S.I. TO HOLD IN OPER. POSN.
- 4. 36 P.S.I. REQ'D. TO RAISE PAN TO OPER. POSN. SET @ 55 P.S.I.

GAGES PER MA-1716-34-0-1
LIST OF COMP PER LC-1716-34-0-0 & -0-1

THIS PRINT IS THE PROPERTY OF BELOIT CORPORATION, THE INFORMATION THEREON IS SUBMITTED IN CONFIDENCE

REVISION	PROCESS APPROVAL	ORDER NO. 68822	CUSTOMER NAME CONTAINER CORP.		MACH. NO. 6					
		FILE NO.	MILL. PHILADELPHIA, PA.							
	3	DEPT. NO. 633	DRAWN MAP	CHK'D. MPS	APP'D. 1 RXP		APP'D. 2 AXB	SCALE 1:5	SHEET OF	REFERENCE DRAWING LC-1716-34-0-0
	4	DATE 8-10-77	TITLE AIR KNIFE-COATER		IDENTIFICATION NUMBER MA-1716-34-0-0					
	5									