

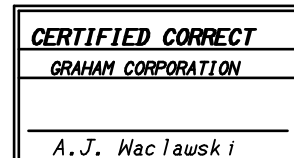
LIST OF MATERIALS			
NO.	DESCRIPTION	MATERIAL	MATERIAL
1	BODY	CARBON & FORGED STEEL	SA-105, SA-234-WPB, SA-516-70, SA-53-B, SA-106-B
2	GUIDE BUSHING	ST. STEEL	SA-479-304
3	SEAL SHAFT	ST. STEEL	SA-479-304
4	SEAL & SEAT FACING	ST. STEEL	SA-479-304
5	LIFT LEVER	STEEL	SA-516-70
6	PIN	ST. STEEL	SA-479-304
7	LIFT SHAFT	ST. STEEL	SA-479-304
8	SHAFT BUSHING	TEFLON	
9	HANDWHEEL	ALUM.	
10	"O" RING SEAL	BUNA "N"	
11	SEAL DISC	ST. STEEL	SA-240-304
12	BEARING PLATE	ST. STEEL	SA-240-304
13	GUIDE BARS	STEEL	C-1018
14	GASKETS	NON-ASB.	MANVILLE STYLE 961

TABLE OF DIMENSIONS												
SIZE	A	B	C	D	E	F	G	H	J	K	U/M	EST.WT.
16"	759	610	699	203	502	281	292	13	-	-	MM	318KG
150* RF	29 7/8	24	27 1/2	8	19 3/4	11 1/16	11 1/2	1/2	3/4	3/8	IN	700LB

- NOTES:
- 1) BOLT HOLES STRADDLE CL'S.
  - 2) ALL N.P.T. CONNECTIONS ARE FEMALE TAPERED PIPE THREAD.
  - 3) INTERNAL MECHANISM IS ROTATED 90 FOR ILLUSTRATIVE PURPOSES.
  - 4) FLANGES ON 4" THRU 24" ARE 150\* ANSI (RF), 30" THRU 36" ARE 150\* (RF) DRILLING & THICKNESS.
  - 5) PSV-2032, SET @ 0.5 PSIG, RELIEVING CAPACITY 82,000 LBS./HR.
  - 6) PSV-2032 USED FOR SURFACE CONDENSER CD-01.

CUSTOMER/CLIENT - MINERGY NEENAH LLC  
 PROJECT - STG COGENERATION PROJECT  
 PROJECT NO - 98-047 MIN  
 ENGINEER/CONTRACTOR - PCI ENERGY GROUP  
 PCI DWG FILE NO. - SC-101-004  
 CUST. ORDER NO.- 98-047MIN-M001  
 GRAHAM JOB NO.- 98-37360M  
 DESIGN - HEI  
 CONSTRUCTION - ASME  
 INSPECTION - CUSTOMER & ASME  
 TAG- PSV-2032  
 SURFACE PREP.- GRAHAM STD  
 PAINT (EXTERNAL CARBON STEEL SURFACES)  
 INDURACOTE IC-9252 RED OXIDE PRIMER  
 FINISH: CARBOLINE #890 (GRAY) 4-6 MILS DFT

SUBJECT TO ANY EXISTING RIGHTS OF THIRD PARTIES, THIS DOCUMENT AND THE INFORMATION THEREIN IS THE PROPERTY OF GRAHAM CORPORATION AND MUST NOT BE COPIED, IN WHOLE OR IN PART, OR USED FOR MANUFACTURE OR OTHERWISE DISCLOSED WITHOUT THE PRIOR WRITTEN CONSENT OF GRAHAM.  
 COPYRIGHT GRAHAM CORPORATION  
 BATAVIA, N.Y.



REV	DESCRIPTION	MADE	CHKD	DATE
B	REV'D NOTE #5 & #6, ADDED PO NO., & REV'D GAUGE GLASS TAG NO.	LRE		03/25/99
A	REVD PER CUSTOMER PRINT DATED 02/05/99	RKN	JCS	02/19/99
0	ORIGINAL ISSUE	---	---	-----

<b>GRAHAM CORPORATION</b> 20 FLORENCE AVE. BATAVIA, NEW YORK					
<b>GRAHAM VIKING</b> <b>VERTICAL ATMOSPHERIC RELIEF VALVE</b>					
SCALE	MADE	CHKD	APPD	DATE	DWG. NO.
NONE	GPF	AJW		1/19/99	B-50629-21
					REV
					B