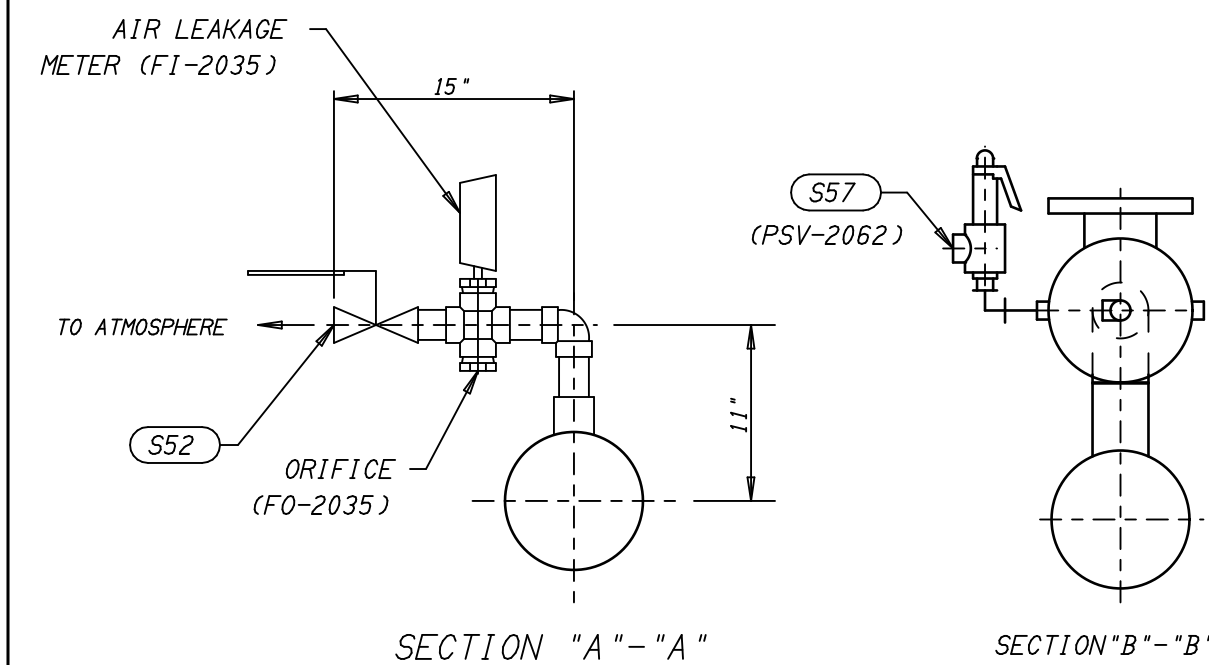


SURFACE CONDENSER VIEWED FROM COOLING WATER CONN. END



- NOTES:
- 1) BOLT HOLES STRADDLE C.L.'S.
 - 2) ALL N.P.T. CONNECTIONS ARE FEMALE TAPERED PIPE THREAD.
 - 3) CONNECTION FLANGES ARE ANSI STD. DRILLING & THICKNESS UNLESS OTHERWISE NOTED.
 - 4) SAFETY DEVICES OR OVER-PRESSURE PROTECTION SHALL BE PROVIDED PRIOR TO PLACING VESSEL IN SERVICE.
 - 5) DIMENSIONAL TOLERANCES UNLESS OTHERWISE NOTED: TEMA STD.
 - 6) DIMENSIONS ARE IN U.S. CUSTOMARY.
 - 7) EJECTOR PACKAGE MOUNTED ON SURFACE CONDENSER.
 - 8) REFER TO ACCESSORY LIST DWG NO. A-50629-41 FOR INSTRUMENT, DEVICE, NOS., DESCRIPTIONS, ETC.
 - 9) REFER TO DWG NO. D-50629-1 FOR SURFACE CONDENSER.
 - 10) REFER TO DWG NO. D-50629-31 FOR PIPING AND INSTRUMENTATION DIAGRAM.

SUBJECT TO ANY EXISTING RIGHTS OF THIRD PARTIES, THIS DOCUMENT AND THE INFORMATION THEREIN IS THE PROPERTY OF GRAHAM CORPORATION. AND MUST NOT BE COPIED, IN WHOLE OR IN PART, OR USED FOR MANUFACTURE OR OTHERWISE DISCLOSED WITHOUT THE PRIOR WRITTEN CONSENT OF GRAHAM CORPORATION. COPYRIGHT GRAHAM CORPORATION BATAVIA, N.Y.

MATERIALS OF CONSTRUCTION		
PART NAME	MATERIAL	SPECIFICATION NO.
SHELL	CARBON & FORGED STEEL	SA-53-B, SA-106-B, SA-516-70, SA-234-NPB & SA-105
INLET CHANNEL	CARBON & FORGED STEEL	SA-53-B, SA-516-70, & SA-105
RETURN CHANNEL	STEEL	SA-516-70, A-234-NPB & A-105
TUBESHEETS	STAINLESS STEEL	SA-240-316
TUBES	STAINLESS STEEL	SA-249-TP316, 3/4" O.D. x 22 BWG (AVG)
SHELL DIV. PL	CARBON STEEL	SA-516-70
BAFFLES	CARBON STEEL	SA-516-70
GASKETS	NON-ASBESTOS	MANVILLE #961
BOLTING	CARBON & ALLOY STEEL	SA-193-B7 & SA-194-2H
DIFFUSER	CAST STEEL	SA-216 WCB
AIR CHAMBER	CAST STEEL	SA-216 WCB
STEAM CHEST	STEEL	SA-36, SA-516-70 & A-105
STEAM NOZZLES	STAINLESS STEEL (416)	A-582

ACCESSORY ITEM #	SYMBOL	NO REQD	SIZE	CONNECTION SCHEDULE		REMARKS
				M= MOTIVE	S=SHELL SIDE T=TUBE SIDE	
19,20,22	M1	1	1"	300# ANSI (RF)	MOTIVE INLET	M1 STEAM AT 350 PSIG, 585°F
14 & 15	S51	1	3"	150# ANSI (R.F.)	VAPOR INLET	
8	S52	1	1 1/2"	NPT (3000#)	VAPOR OUTLET	W/MAN VALVE & LEAKAGE METER
9	S53	1	1 1/2"	NPT (3000#)	CONDENSATE OUTLET	INTER-CONDENSER W/ITT FT015H-1
23	S54	1	1 1/2"	NPT (3000#)	CONDENSATE OUTLET	AFTER-CONDENSER W/ITT FT015H-1
	S55	2	1/2"	NPT (3000#)	TEST CONN	PLUGGED
	S56	1	1/2"	NPT	DRAIN	
	S57	1	1 1/4"	NPT	RELIEF VALVE EXHAUST	SET @ 15 PSIG
	S58	1	2"	150# (R.F.)	HOGGER EXHAUST	
17 & 18	T51	1	3"	150# ANSI (R.F.)	WATER INLET	
17 & 18	T52	1	3"	150# ANSI (R.F.)	WATER OUTLET	
	T53	1	3/4"	NPT (3000#)	VENT	PLUGGED
	T54	1	3/4"	NPT (3000#)	DRAIN	PLUGGED
	T55	4	3/4"	NPT (3000#)	TEST CONN	PLUGGED

BP SYMBOL FOR SHIPPING BREAK POINTS.

EST'D. WGTs. (LBS.)
 EMPTY ----- 1450
 FLOODED ----- 1700
 OPERATING ----- 1820

INTER/AFTER CONDENSER

CERTIFIED CORRECT
 GRAHAM CORPORATION

A. J. Wacławski

M.A.W.P. (P.S.I.G.)	TEMP. (° F.) DESIGN/MDMT	HYDRO TEST PRESS. (P.S.I.G.)	CORR. ALLOW. (INCHES)
FV & 15	225/0	23	.0312
75	150/0	115	.0625
		300	
		23	

① CARBON STEEL PRESSURE PARTS

REV	DESCRIPTION	MADE	CHKD	DATE
D	DELETED BP @ 1ST STG SUCT VLV, ADDED BP @ HOGGER EXHAUST PER SHOP REQUEST	GPF		04/23/99
C	ADDED VALVE TO END VIEW, ADDED DIMENSIONS, & REV'D EJECTOR TEST PRESSURES	LRE	JCS	04/20/99
B	REV'D VAPOR PIPING PER CUSTOMER FAX DATED 03/18/99, ADDED PD NO. & REV'D TAGS	LRE	JCS	03/25/99
A	REV'D PER CUSTOMER PRINT DATED 02/05/99	RKN	JCS	02/16/99
0	ORIGINAL ISSUE			

CUSTOMER/CLIENT - MINERGY NEENAH LLC
 PROJECT: STG COGENERATION PROJECT
 PROJECT NO. - 98-047 MIN

ENGINEER/CONTRACTOR - PCI ENERGY GROUP
 PCI DWG FILE NO. - SC-101-006
 CUSTOMER ORDER NO. - 98-047MIN-001
 GRAHAM JOB NO. - 98-37360 M

DESIGN - ASME SECTION VIII DIV 1 1995 EDITION A97 ADDENDA
 CONSTRUCTION - (CONDENSER), H.E.I. (REMAINDER)
 INSPECTION - CUSTOMER & ASME (CONDENSER ONLY)
 STAMPING - ASME (CONDENSER ONLY)
 TAG - SJAЕ FOR CD-01, 1/A CONDENSER; CD-02
 PAINTING (EXTERNAL CARBON STEEL SURFACES)
 SURFACE PREPARATION - GRAHAM STD
 PAINT: INDURACOTE 1C-9252 RED OXIDE PRIMER

GRAHAM CORPORATION
 20 FLORENCE AVE. BATAVIA, NEW YORK

TWO STAGE CONDENSING
 EJECTOR PACKAGE
 MODEL (1-42-088-2-2H)
 TAG: CD-02

SCALE	DSGN	DRWN	CHKD	APPD	DATE	DWG. NO.	REV
1:12	LRE	LRE	GPF		01/21/99	D-50629-11	D