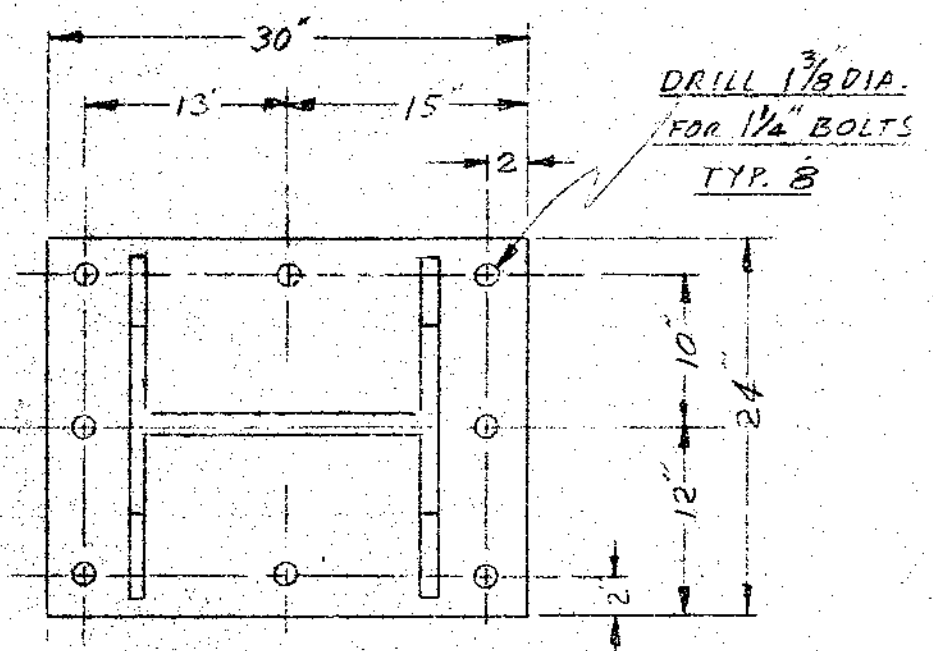


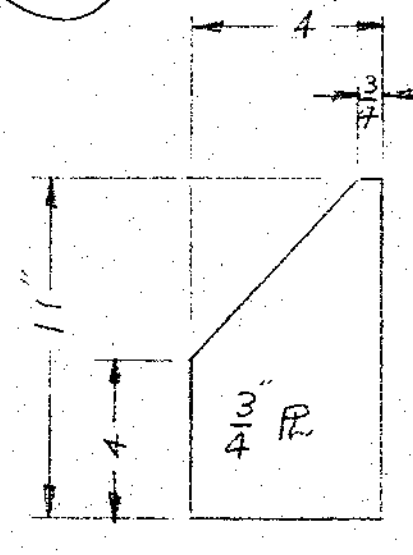
BILL OF MATERIAL

ITEM	NAME	DISCRIPTION / SIZE	TOTAL REQD
1	RAILROAD TRACK	60S ASCE - 4-1/4" x 4-1/4"	200 ft
2	BEAM CAP	1-1/4" x 14-1/2" CRS	200 ft
3	MAIN BEAM	WF 36" x 135 lb	200 ft
4	8 SUPPORT COLUMNS	WF 21" x 101 lb	210 ft
5	14 SWAY BRACES	WF 8" x 8" x 40 lb	140 ft
6	END CROSS BRACES	WF 18" x 7.5" x 50 lb	51 ft
7	8 COLUMN BASE PLATES	1-1/2" x 24" CRS	12 ft
8	5 LATERAL BRACES	WF 6" x 6" x 20 lb	60 ft

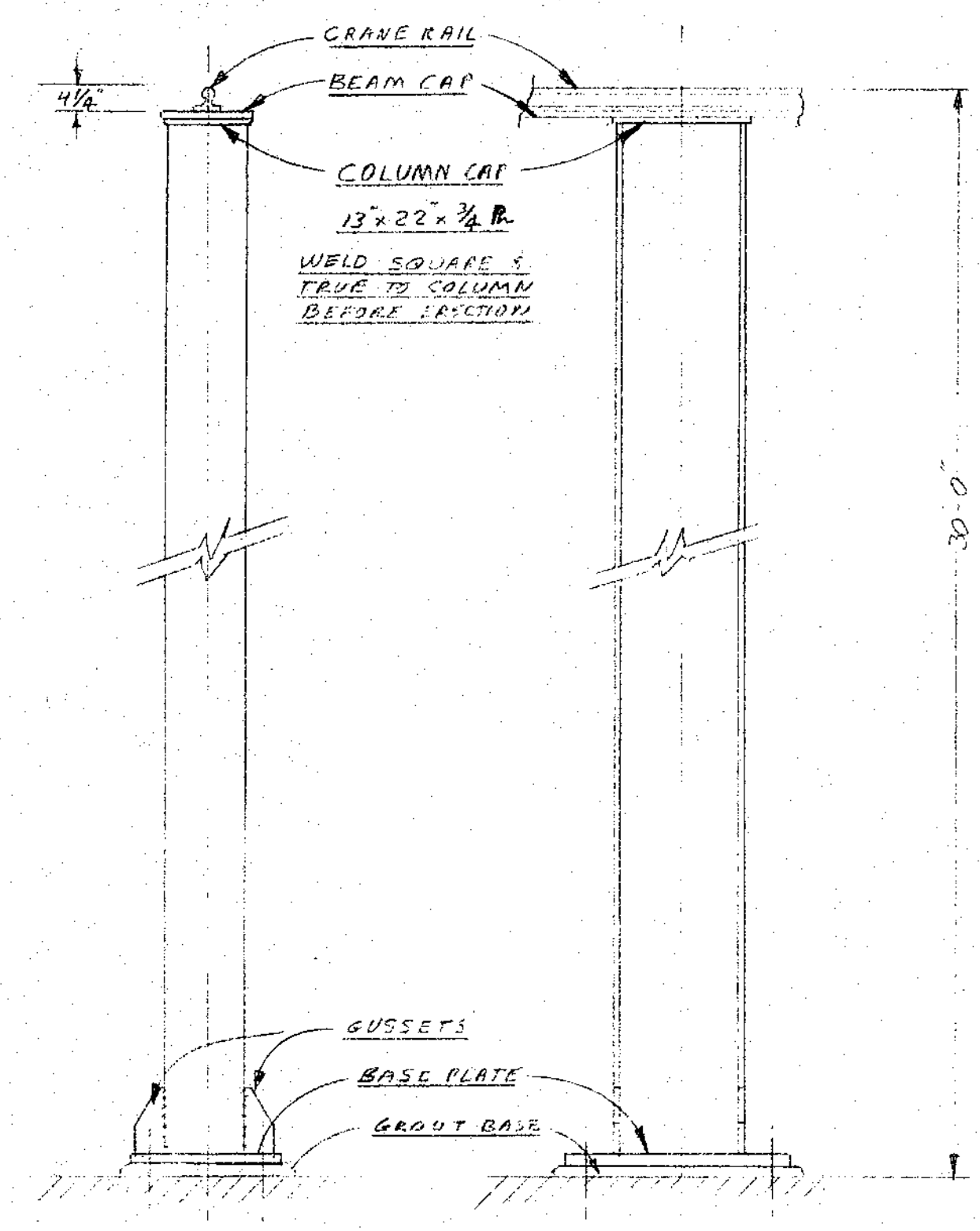
10-1" BOLTS INSTEAD OF 8-1/4" BOLTS WILL BE FINE. *MLZ*



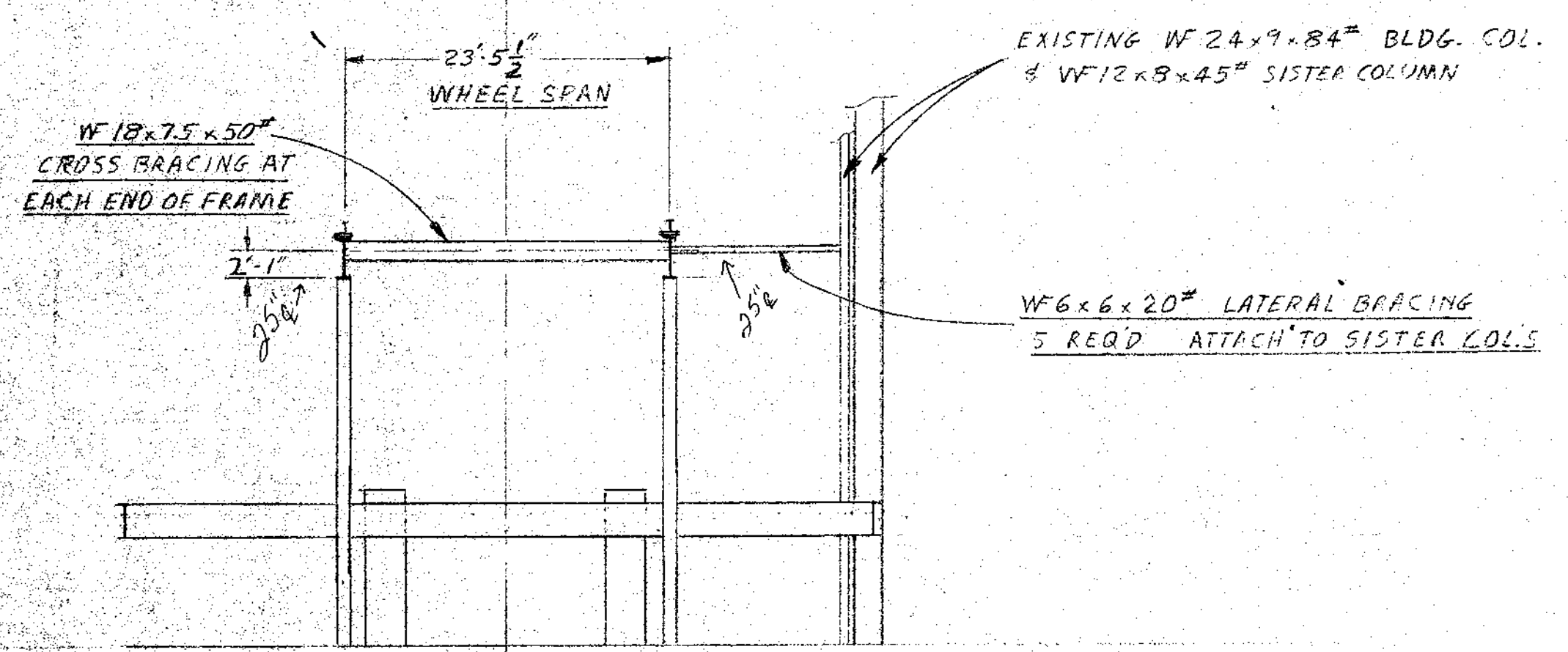
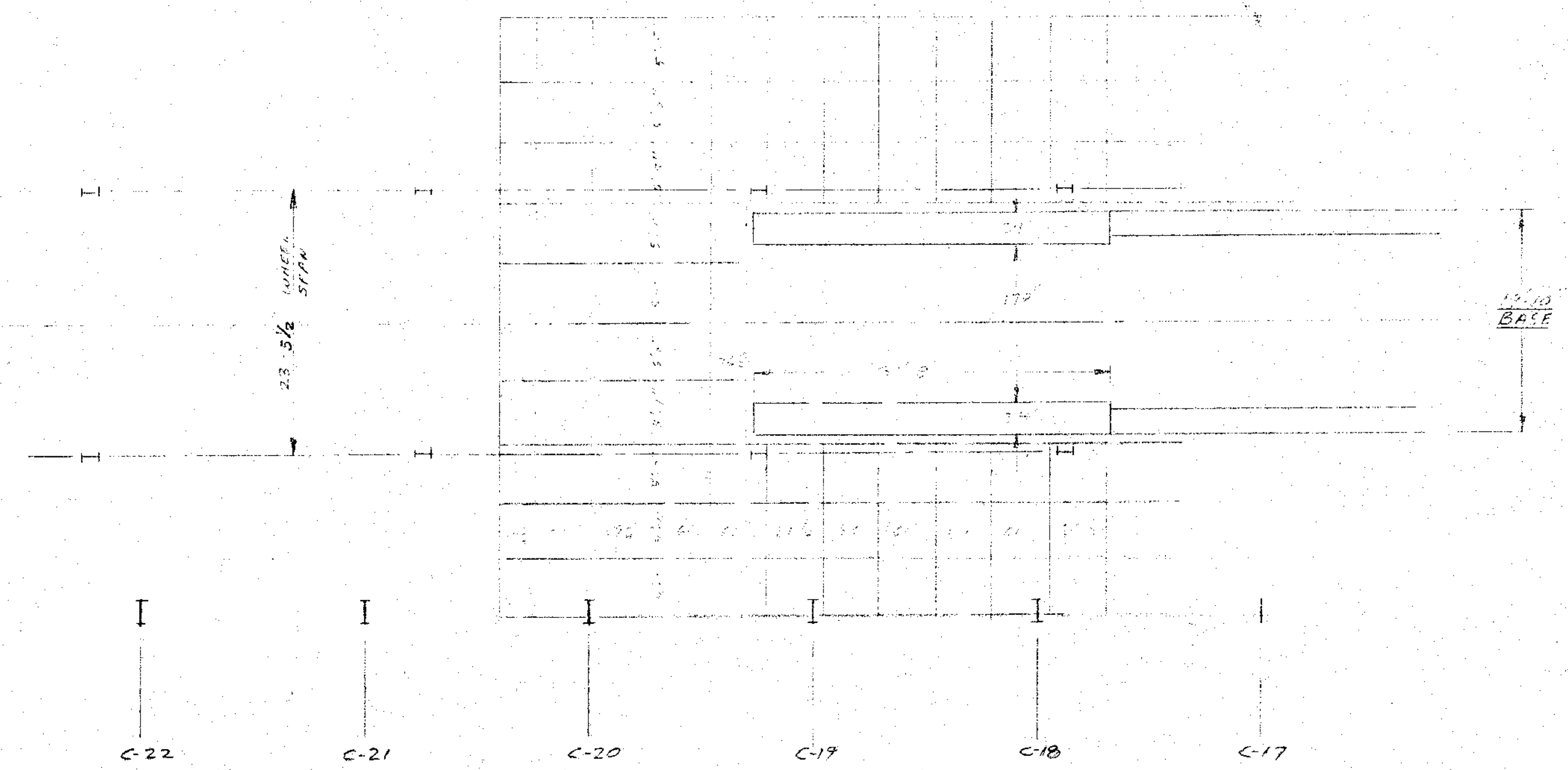
BASE PLATE DETAIL
N.P.S.



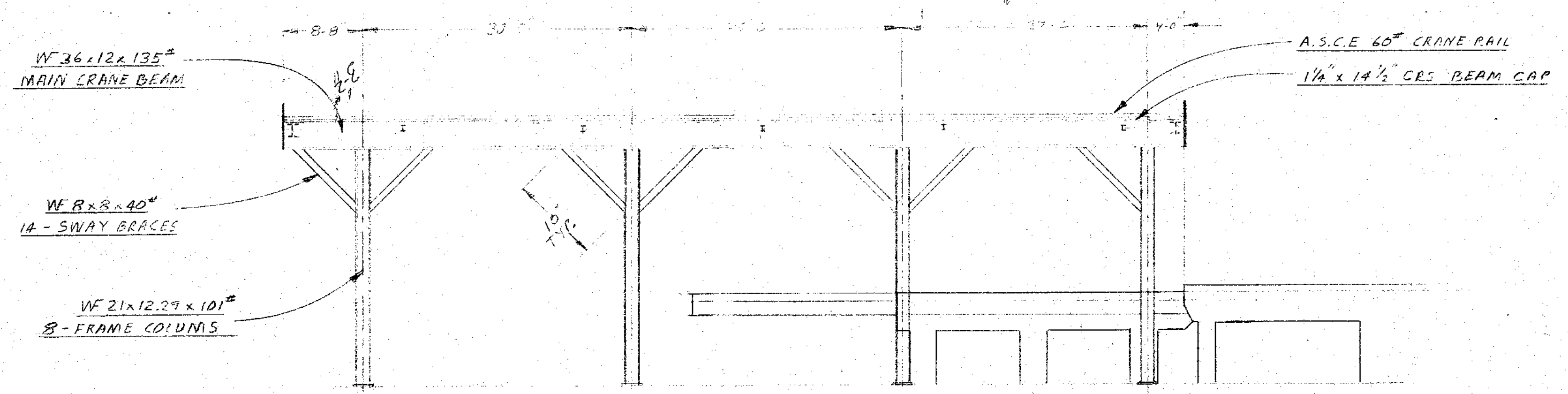
GUSSET DETAIL
N.P.S.



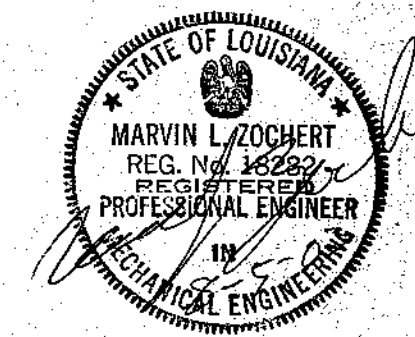
COLUMN DETAIL
1/2" = 1'



END VIEW & DECK SUPPORT NOT SHOWN
1" = 10'



BRIDGE CRANE FRAME
1" = 10'



SHEET 1 of 1		MARVIN L. ZOCHERT, P.E. (Professional Engineer)	
ENGINEER MARVIN L. ZOCHERT, P.E.	PROJECT RSI MILL	DESIGNED BY EDM MORAN	CHECKED BY OLEN WATSON
DRAWN BY <i>MLZ</i>	PROJECT INSTALL 25 TON BRIDGE CRANE		TITLE CRANE FRAME LAYOUT
DATE 5-APR-03	SCALE 1" = 10'		