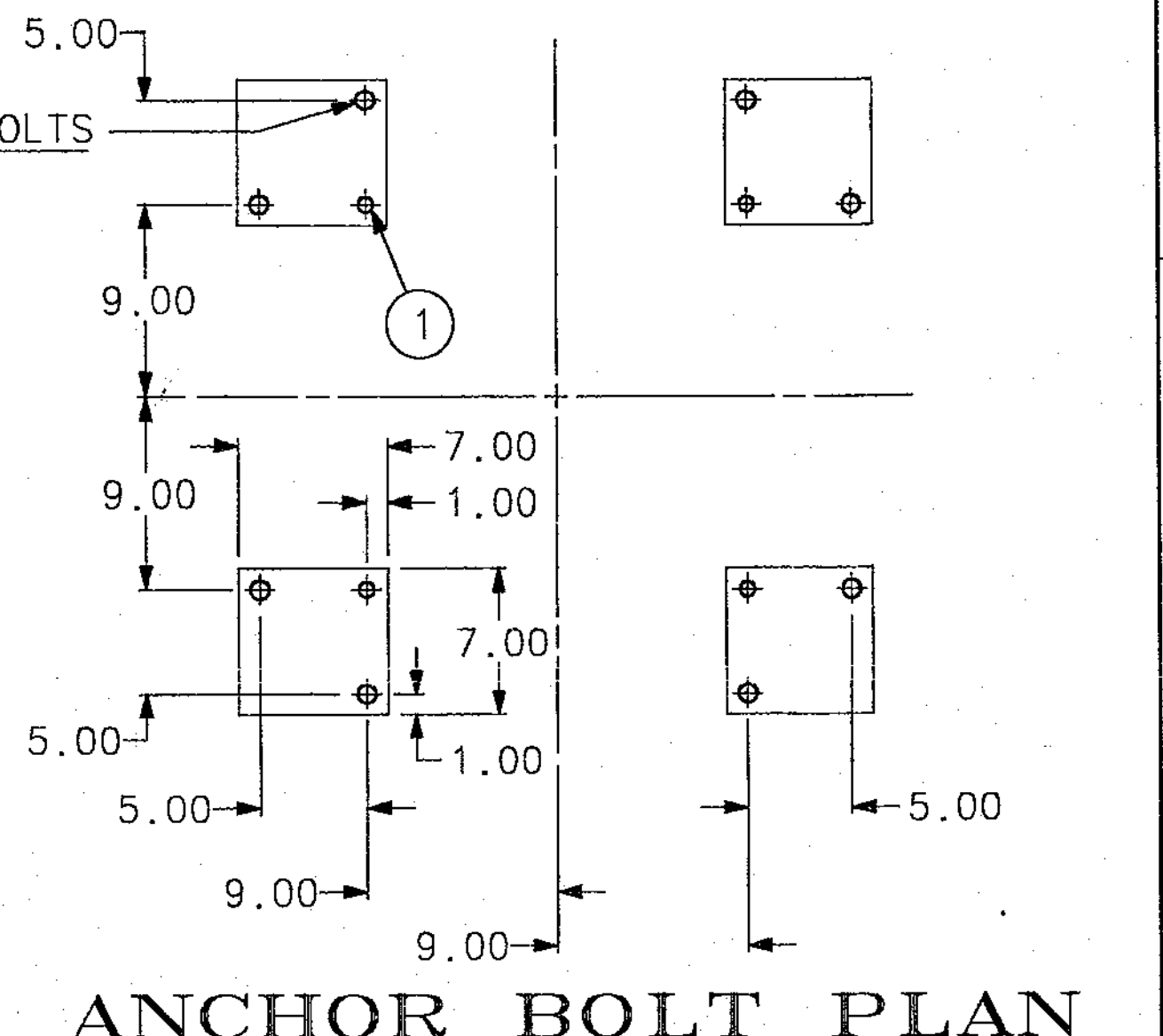
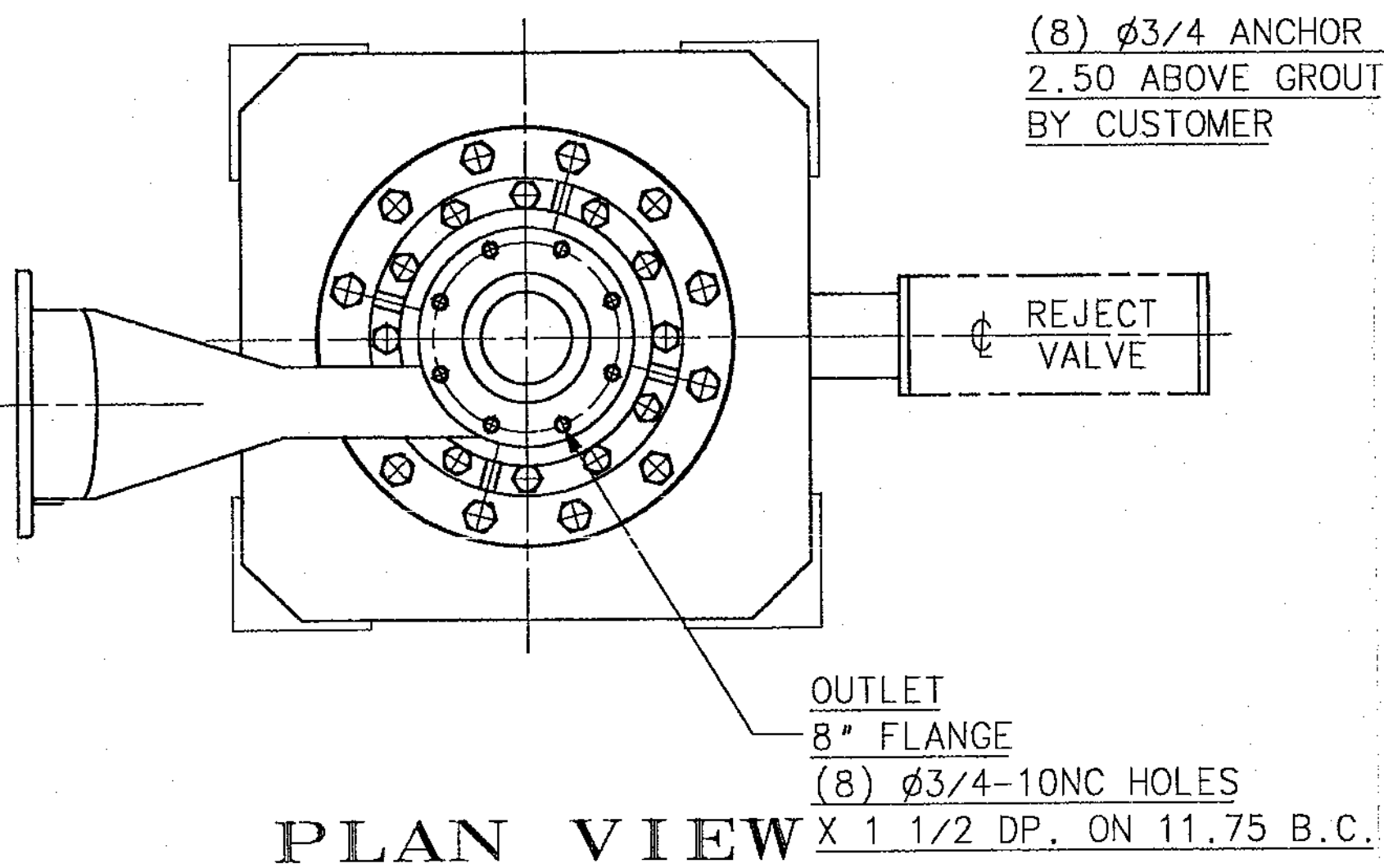


ITEM No.	DRAWING No. PART No.	QTY	MATERIAL	DESCRIPTION	ITEM No.	DRAWING No. PART No.	QTY	MATERIAL	DESCRIPTION
1	1006402	4	S.A.E. GR.2	SQ. HD. SET SCREW CUP PT.-3/4"-10NC-3A X 2 LG	20	2002216-001	1	EPDM	GASKET - 3 11/16 O.D. X 2 3/4 I.D.
2	1000819	16	S.A.E. GR.2	HEX HEAD CAP SCREW - 1"-8NC-2A X 3 3/4 LG	21	2005089	1	CARBON STEEL	FLANGE, SQUARE
3	1036808	28	CARBON STEEL	HEAVY HEX FULL NUT - 1"-8NC-2B	22	2005539	1	STEEL	PLATE, CLAMP
4	1000803	12	S.A.E. GR.2	HEX HEAD CAP SCREW - 1"-8NC-2A X 3 LG	23	2005540	1	PLEXIGLAS	SIGHT WINDOW
5	1000604	8	S.A.E. GR.2	HEX HEAD CAP SCREW - 3/4"-10NC-2A X 1 3/4 LG	24	2001807	1	ACI-CFBM	SLEEVE, WEAR
6	1002811	8	S.A.E. GR.8	SOCKET HD CAP SCREW - 3/4"-10NC-2A X 5 LG	25	2005510	1	ASTM A181 GR.1	NECK, REJECT
7	1036806	8	CARBON STEEL	HEAVY HEX FULL NUT - 3/4"-10NC-2B	26	3006904	1	*****	SUB-ASSEMBLY, PROXIMITY SWITCH
8	1002803	4	S.A.E. GR.8	SOCKET HD CAP SCREW - 3/4"-10NC-2A X 1 3/4 LG	27	3011385	1	*****	DIAGRAM, PIPING
9	1002801	12	S.A.E. GR.8	SOCKET HD CAP SCREW - 3/4"-10NC-2A X 1 1/4 LG	28	3007536	1	ALUM. OXIDE	CARTRIDGE, CONE
10	1001405	4	18-8 STN. STL.	HEX HEAD CAP SCREW - 3/8"-16NC-2A X 1 1/2 LG	29	1042804	1	MASONITE	FLANGE PROTECTOR
11	3014276	1	*****	ASSEMBLY, PAINT AND NAMEPLATE LOCATIONS	30	1042805	1	MASONITE	FLANGE PROTECTOR
12	3006834	1	ASTM A48 CL.35	CHAMBER, REJECT	31	1000601	2	SAE GR. 2	HEX HEAD CAP SCREW- 3/4"-10NC-2A X 1" LG
13	BY CUSTOMER	2	*****	VALVE, 8" LOHSE PULP TYPE CYL. OPERATED	32	1000802	12	SAE GR. 2	HEX HEAD CAP SCREW- 1"-8NC-2A X 2-1/2" LG
14	4005066	1	STN STL	BASE	33	2002094-006	1	GARLOCK	GASKET- 21 1/4 O.D. X 14 1/2 I.D.
15	3007074	1	ASTM A48 CL.35	HEAD, INLET	34	2001784	1	ASTM A48 CL.35	CONE, TOP
16	2005090	2	GARLOCK	GASKET, SQUARE	35	1000702	2	SAE GR 2	HEX HEAD CAP SCREW- 7/8"-9NC-2A X 2" LG
17	2002095-001	3	GARLOCK	GASKET - 11 O.D. X 8 I.D.	36	1036807	2	CARBON STEEL	HEAVY HEX FULL NUT- 7/8"-9NC-2B
18	2002094-059	1	GARLOCK	GASKET - 21 1/4 O.D. X 15.25 I.D.					
19	2002094-017	1	GARLOCK	GASKET - 25 O.D. X 17 3/8 I.D.					



- NOTES:**
- ELUTRIATION INLET: MIN. WATER SUPPLY PRESSURE MUST BE 68.9 kPa [10 P.S.I.] GREATER THAN INLET PRESSURE AT 1.26 lt/sec [20 G.P.M.] FOR MIN. STOCK LOSS IN REJECTS AT 0.8 TO 1.0% CONSISTENCY.
 - MAX. INLET PRESSURE 689 kPa [100 P.S.I.]
 - WATER FLOW TO BE CONTROLLED BY HAND VALVE INSTALLED BY CUSTOMER. CHECK VALVES ARE RECOMMENDED TO PREVENT STOCK FROM PLUGGING WATER LINES IN EVENT OF PRESSURE LOSS.
 - WEIGHT OF UNIT EMPTY - 1406 kgs [3100 lbs.] APPROX. WEIGHT WITH STOCK - 1724 kgs [3800 lbs.] APPROX. TOTAL DYNAMIC LOAD = 2159kgs [4760 lbs.], OR 540 kgs [1190 lbs] PER PAD
 - NOMINAL OPERATING DATA
 - ACCEPT PRESSURE 34.5 - 68.9 kPa [5 - 10 P.S.I.] MINIMUM

THIS DRAWING IS ISSUED TO CERTIFY THE DIMENSIONS OF EQUIPMENT SUPPLIED BY BLACK CLAWSON

CUSTOMER- US GYPSUM CO
 MILL JACKSONVILLE, FL
 CUSTOMER ORDER 22522619
 SHARTLE ORDER 4870391
 SERIAL NUMBER 97-LC17-1923

THE BLACK CLAWSON CO.
 SHARTLE DIV.
 MIDDLETOWN, OHIO
 DATE OF CERTIFICATION *2/1/97*

C.A.D. DRAWING DO NOT UPDATE MANUALLY		1	REVISED PER CUSTOMER APPROVAL	ALL	02-28-97	WJH	
DIMENSIONS ARE IN INCHES UNLESS OTHERWISE SPECIFIED		No.	REVISION	ZONE	DATE	BY	CHKD
STANDARD TOLERANCES UNLESS OTHERWISE SPECIFIED							
METRIC	INCH						
ANGLE NUMBER	41	ONE PLACE DECIMAL	40.04				
ONE PLACE DECIMAL	40.3	TWO PLACE DECIMAL	40.01				
TWO PLACE DECIMAL	40.15	THREE PLACE DECIMAL	40.005				
ANGULAR	40.5"	ANGULAR	40.5"				
THESE LIMITS DO NOT APPLY TO ASSEMBLY OR FOUNDATION PLAN DRAWINGS							
ORDER No.	4870391	REF DRG No.	4001284-001	SUPERSEDES	D188364		
SERIAL No.	97-LC17-1923	USED ON		SUPERSEDED BY			
CUSTOMER	US GYPSUM CO.	WEIGHT		PATTERN No.			

Black Clawson Company
 SHARTLE DIVISION / STOCK PREP SYSTEMS / PULP MILL PRODUCTS
 MIDDLETOWN, OHIO

TITLE ASSEMBLY NO. 17 LIQUID CYCLONE - CAST IRON UNIT

DRAWN	WJ HAHN	DATE	02-03-97	THIRD ANGLE PROJECTION	SCALE
CHECKED	<i>[Signature]</i>	DATE	2-26-97		1/8
APPROVED	<i>[Signature]</i>	DATE	2-27-97		1 OF 1

094 DRG. No. 48703910