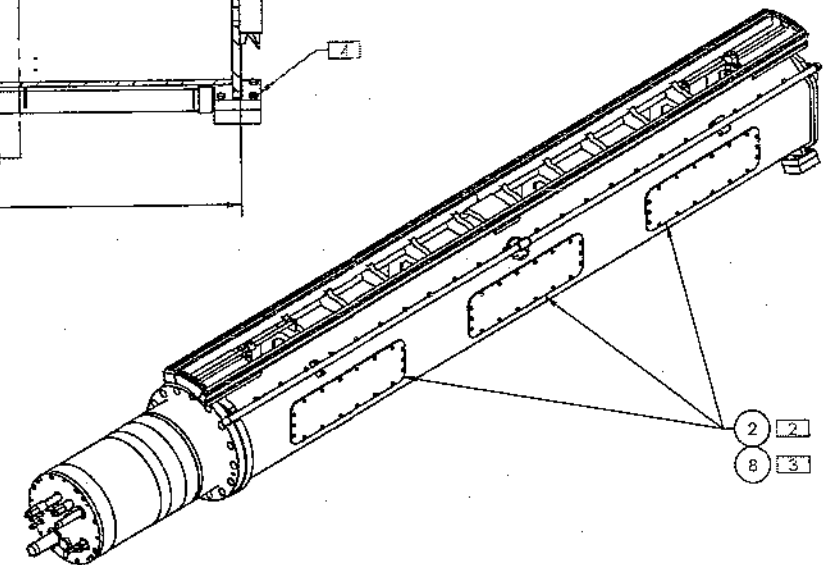
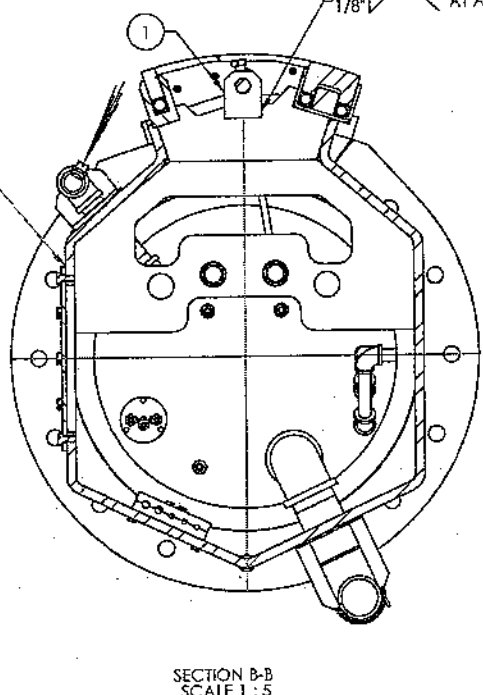
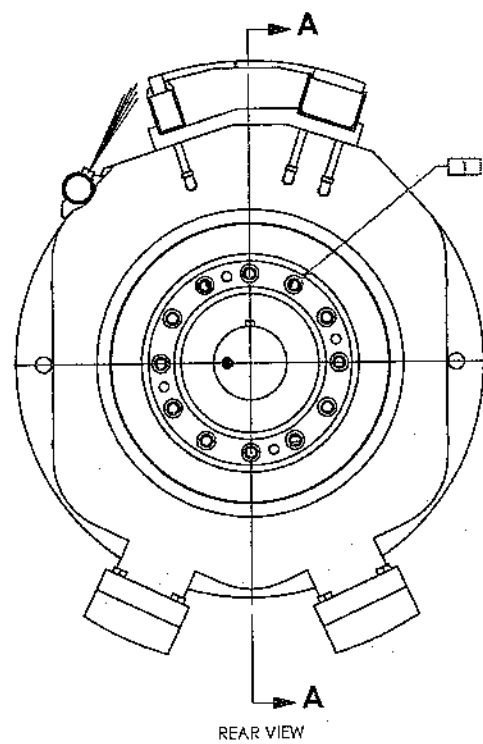
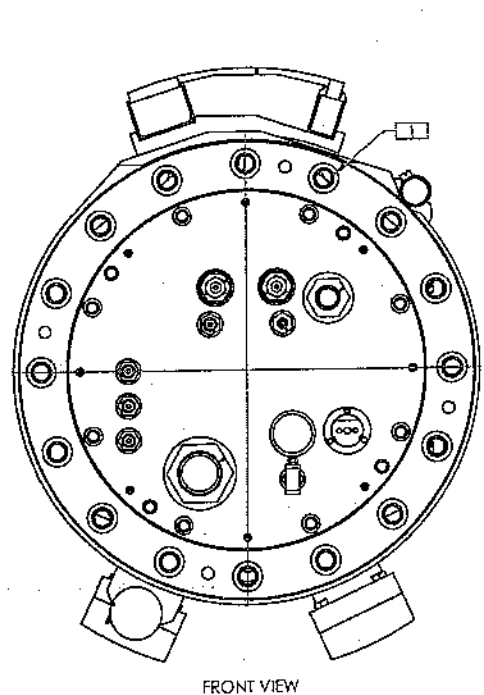
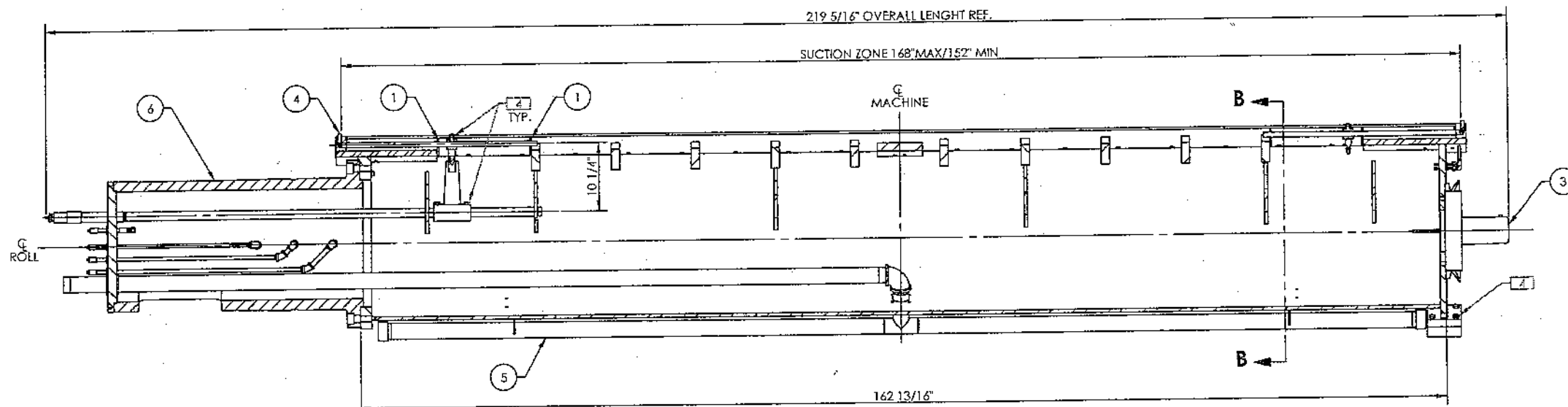
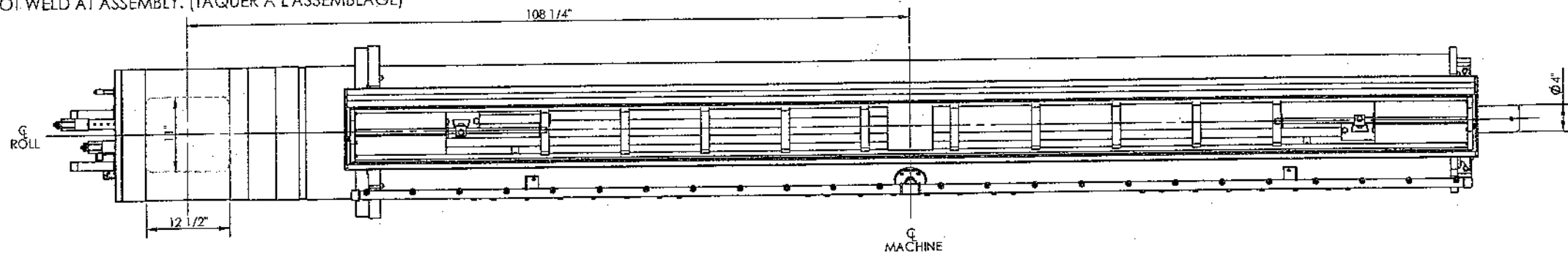


**NOTE:**

1. USE LOCTITE FOR TO SEAL SOCKET COUNTERSUNK SCREWS OF THE PILOT SHAFT AND THE HOLLOW SHAFT. (UTILISER DU LOCTITE POUR SCELLER LES BOULONS DE L'ARBRE CREUX ET DE L'ARBRE DE CAISSE.)
2. USE LOCTITE FOR TO SEAL CLOSING PLATES. (UTILISER DU LOCTITE POUR SCELLER LES FENÊTRES.)
3. USE WIRE FOR TO FIXE ALL DRILL HEX. BOLTS. (ATTACHER TOUS LES BOULONS PERCÉS AVEC DU FIL)
4. SPOT WELD AT ASSEMBLY. (TAQUER À L'ASSEMBLAGE)

ASSY	ITEM	QTY	DESCRIPTION	LENGTH	MATERIAL	REMARK
	1	4	ADJUSTING ROD SUPPORT		S.S. 316L	8110-0001
	2	3	CLOSING PLATE		S.S. 316L	8110-0002
	3	1	PILOT SHAFT ASSY			8091-0000
	4	1	SEALLING SYSTEM			8095-0000
	5	1	PIPING AND SHOWER			8096-0000
	6	1	HOLLOW SHAFT ASSY			8111-0000
	7	1	SUCTION BOX		SS-316L	8113-0000
	8	54	DRILLED HEX. BOLT Ø3/8-16NC	0.75"	#90121A622	McMASTER



GENERAL TOLERANCES UNLESS NOTED OTHERWISE		REV	DATE	DESCRIPTION	PAR	APP
FABRICATION:		DATE: 2008-05-07		<b>CANMEC</b> PULP AND PAPER 3453, Chemin des Chutes Ville de la Boie C.P. 36 G7E 3P9 TEL: (418) 544-3391 FAX: (418) 544-0848	<b>SW</b>	<b>8110-0000</b>
> Ø @ <10' ±1/8" [3 mm] >10' @ <20' ±1/4" [6 mm] >20' ±3/8" [10 mm]		DRAW: JMI DUFOUR				
MACHINING:		CHECK: [Signature]		CUSTOMER: THUNDER BAY FINE PAPERS		
FRACT. = ±0.060" [1.0 mm] 0.0 = ±0.030" [0.5 mm] 0.00 = ±0.010" [0.1 mm] 0.000 = ±0.005"		APPR: [Signature]		TITLE: WIRE SECTION PM #6		
SURFACE FINISH: 125 √ 32 √		SCALE: 1:10		SUCTION COUCH ROLL		
WELDING: [Symbol]		FILE NAME: 8110-0000		SUCTION BOX ASSEMBLY		
T = THICKNESS OF THINNESS PLATE TO BE WELDED UNLESS NOTED OTHERWISE		PRINT: 2008-05-16		PROJECT NO: 16350		DRAWING NO: 8110-0000
DRAWING NO		REFERENCE DRAWING		REV.		REV: 0